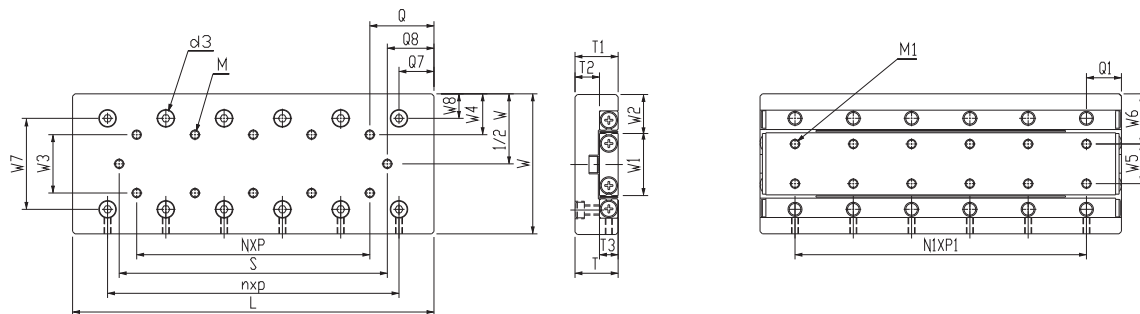


GOORA / GOORA - N / GOORA - B



Specification

Model No.			Max. Stroke (mm)	Roller Dia. (mm)	Main Dimensions (mm)			Table Mounting Dimensions (mm)															
Standard	Antirust	Black Coating			W	T	L	W ₃	W ₄	W ₇	W ₈	Q	Q ₇	Q ₈	N*P	M	n*p	S	d ₃	T ₁	T ₂		
GOORA30-25	GOORA30-25-N	GOORA30-25-B	12	Ø1.5	30±0.1	11±0.1	25	10	10	18.4	5.8	12.5	7.5	2.5	/	M2	1*10	20	4.1	11	7		
GOORA30-35	GOORA30-35-N	GOORA30-35-B	18											35	4.5		1*10	2*10				26	
GOORA30-45	GOORA30-45-N	GOORA30-45-B	25											45	6		2*10	3*10				33	
GOORA30-55	GOORA30-55-N	GOORA30-55-B	32											65	8.5		4*10	5*10				48	
GOORA30-65	GOORA30-65-N	GOORA30-65-B	40											75	11		5*10	6*10				53	
GOORA30-75	GOORA30-75-N	GOORA30-75-B	45											85	13.5		6*10	7*10				58	
GOORA40-35	GOORA40-35-N	GOORA40-35-B	18											Ø2.0	14±0.1		35	15				12.5	25.5
GOORA40-50	GOORA40-50-N	GOORA40-50-B	30	50	12.5	4.5	1*15	1*25	41														
GOORA40-65	GOORA40-65-N	GOORA40-65-B	40	65	20	7	2*15	1*25	51														
GOORA40-80	GOORA40-80-N	GOORA40-80-B	50	80	22.5	12	4*15	2*25	71														
GOORA40-95	GOORA40-95-N	GOORA40-95-B	60	95	17.5	14.5	5*15	3*25	81														
GOORA40-110	GOORA40-110-N	GOORA40-110-B	70	110	25	17	6*15	3*25	91														
GOORA40-125	GOORA40-125-N	GOORA40-125-B	80	125																			
GOORA60-55	GOORA60-55-N	GOORA60-55-B	30	Ø3.0	60±0.1	18.5±0.1	130	25	17.5	39	10.5	27.5	15	5.5	/	M4	1*25	44	7.5	18.5	10.5		
GOORA60-80	GOORA60-80-N	GOORA60-80-B	45											80	10.5		1*25	2*25				59	
GOORA60-105	GOORA60-105-N	GOORA60-105-B	60											105	15.5		2*25	3*25				74	
GOORA60-130	GOORA60-130-N	GOORA60-130-B	75											130	20.5		3*25	4*25				89	
GOORA60-155	GOORA60-155-N	GOORA60-155-B	90											155	25.5		4*25	5*25				104	
GOORA60-180	GOORA60-180-N	GOORA60-180-B	105											180	30.5		5*25	6*25				119	
GOORA60-205	GOORA60-205-N	GOORA60-205-B	130											205	30.5		6*25	7*25				144	

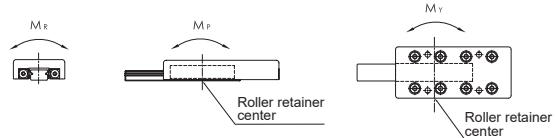
GOORA / GOORA - N / GOORA - B



Material Specification

Material Model No.	Table	Rail	Retainer	Roller
GOORA	Aluminum alloy +black anodized	SUJ2	SUS304	SUJ2
GOORA - N	S50C+Ni	SUJ2+Ni	SUS304	SUJ2
GOORA - B	S50C +phosphate	SUJ2	SUS304	SUJ2

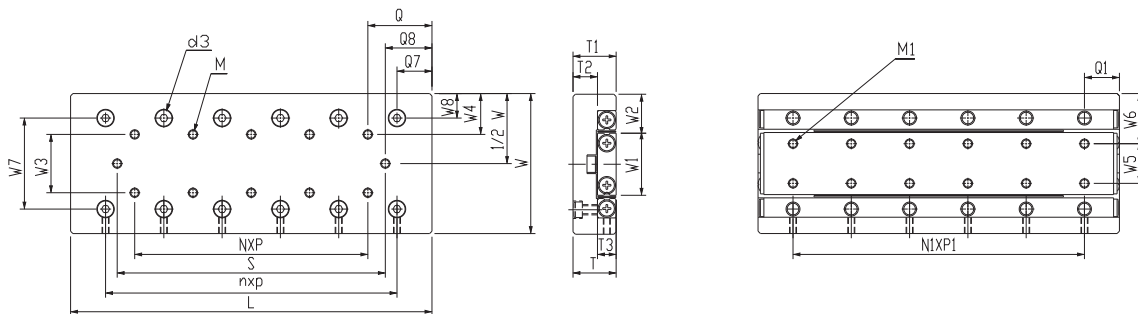
GOORA-N No Surface finished to V-groove surface of the rail.



★ Each of load and torque changes oppositely in stroke variation

Base Mounting Dimensions (Mm)									Basic Dynamic Load Rating C(N)	Basic Static Load Rating Co(N)	Allow-able Load Fu(N)	Static Rated Moment			Weight (kg)		Table Moving Accuracy (μm)	
T ₃	W ₁	W ₂	W ₅	W ₆	N ₁ P ₁	Q ₁	M ₁	M _R (N·m)				M _P (N·m)	M _Y (N·m)	Standard	Antirust	Center Parallelism	Side Parallelism	
4	12.8	8.6	/	15	1*10	7.5	M2		379	576	192	2.6	1.2	1.4	0.03	0.05	2	4
									523	865	288	3.9	2.6	3.0	0.04	0.08		
									657	1,153	384	5.2	4.6	5.2	0.05	0.10		
									783	1,441	480	6.5	7.2	7.9	0.06	0.12		
									903	1,729	576	7.8	10.4	11.2	0.07	0.15		
									1,131	2,306	769	10.4	18.4	17.3	0.09	0.17		
									1,240	2,594	865	11.7	23.3	22.0	0.10	0.19		
6	17	11.5	/	20	1*15	10	M3		8,95	1,170	390	7.0	3.1	3.9	0.07	0.13	2	4
									2,901	4,567	1,522	42.6	22.8	26.6	0.13	0.21		
									2,901	4,567	1,522	42.6	22.8	19.0	0.14	0.25		
									4,338	7,611	2,537	71.0	63.4	57.1	0.20	0.33		
									3,640	6,089	2,030	56.8	40.6	45.7	0.21	0.36		
									5,005	9,133	3,044	85.2	91.3	98.9	0.27	0.45		
									5,005	9,133	3,044	85.2	91.3	83.7	0.28	0.48		
8	26.6	16.7	17	21.5	1*25	15	M4		2,901	4,567	1,522	42.6	22.8	26.6	0.23	0.43	2	5
									4,338	7,611	2,537	71.0	63.4	57.1	0.34	0.62		
									5,646	10,655	3,552	99.5	124.3	115.4	0.45	0.82		
									6,268	12,178	4,059	113.7	162.4	172.5	0.57	1.02		
									7,462	15,222	5,074	142.1	253.7	266.4	0.66	1.21		
									8,603	18,266	6,089	170.5	365.3	350.1	0.77	1.41		
									9,157	19,789	6,596	184.7	428.8	445.2	0.87	1.60		

GOORA / GOORA - N / GOORA - B



Specification

Model No.			Max. Stroke (mm)	Roller Dia. (mm)	Main Dimensions (mm)			Table Mounting Dimensions (mm)														
Standard	Antirust	Black Coating			W	T	L	W ₃	W ₄	W ₇	W ₈	Q	Q ₇	Q ₈	N*P	M	n*p	S	d ₃	T ₁	T ₂	
GOORA80-85	GOORA80-85-N	GOORA80-85-B	50	Ø4.0	80±0.1	24±0.1	85	40	20	53	13.5	42.5	22.5	10.5	/	1*40	64	9.5	24	13		
GOORA80-125	GOORA80-125-N	GOORA80-125-B	75				125							18	1*40	2*40	89					
GOORA80-165	GOORA80-165-N	GOORA80-165-B	105				165							23	2*40	3*40	119					
GOORA80-205	GOORA80-205-N	GOORA80-205-B	135				205							28	3*40	M5	4*40				149	
GOORA80-245	GOORA80-245-N	GOORA80-245-B	155				245							38	4*40	5*40	169					
GOORA80-285	GOORA80-285-N	GOORA80-285-B	185				285							43	5*40	6*40	199					
GOORA80-325	GOORA80-325-N	GOORA80-325-B	215				325							48	6*40	7*40	229					
GOORA100-110	GOORA100-110-N	GOORA100-110-B	60				Ø6.0							100±0.1	31±0.1	110	50				25	64
GOORA100-160	GOORA100-160-N	GOORA100-160-B	95	160	23.5	1*50		2*50	113													
GOORA100-210	GOORA100-210-N	GOORA100-210-B	130	210	31	2*50		3*50	148													
GOORA100-260	GOORA100-260-N	GOORA100-260-B	165	260	38.5	3*50		M6	4*50	183												
GOORA100-310	GOORA100-310-N	GOORA100-310-B	200	310	46	4*50		5*50	218													
GOORA100-360	GOORA100-360-N	GOORA100-360-B	235	360	53.5	5*50		6*50	253													
GOORA100-410	GOORA100-410-N	GOORA100-410-B	265	410	63.5	6*50		7*50	283													
GOORA145-210	GOORA145-210-N	GOORA145-210-B	130	Ø9.0	145±0.1	42.5±0.1		210	85	30	98	23.5	105			55		27	/	1*100		
GOORA145-310	GOORA145-310-N	GOORA145-310-B	180				310							52	1*100		2*100	206				
GOORA145-410	GOORA145-410-N	GOORA145-410-B	350				410							17	2*100		M8	3*100	376			
GOORA145-510	GOORA145-510-N	GOORA145-510-B	450				510							17	3*100		4*100	476				
GOORA145-610	GOORA145-610-N	GOORA145-610-B	550				610							17	4*100		5*100	576				

Ordering Example :	GOORA	-	30	-	25	-	N
	A type table		Table width		Table length		Antirust

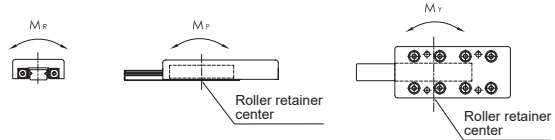
GOORA / GOORA - N / GOORA - B



Material Specification

Material Model No.	Table	Rail	Retainer	Roller
GOORA	Aluminum alloy +black anodized	SUJ2	SUS304	SUJ2
GOORA - N	S50C+Ni	SUJ2+Ni	SUS304	SUJ2
GOORA - B	S50C +phosphate	SUJ2	SUS304	SUJ2

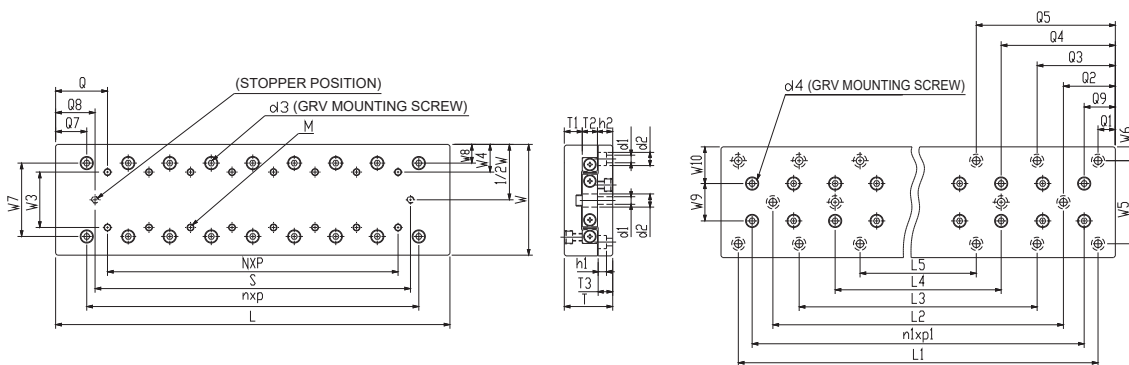
GOORA-N No Surface finished to V-groove surface of the rail.



★ Each of load and torque changes oppositely in stroke variation

Base Mounting Dimensions (mm)								Basic Dynamic Load Rating C(N)	Basic Static Load Rating Co(N)	Allow-Able Load Fu(N)	Static Rated Moment			Weight (kg)		Table Moving Accuracy (μm)	
T ₃	W ₁	W ₂	W ₅	W ₆	N ₁ *P ₁	Q ₁	M ₁				M _R (N·m)	M _P (N·m)	M _V (N·m)	Standard	Antirust	Center Parallelism	Side Parallelism
11	38	21	27	26.5	1*40	22.5	M5	6,617	9,357	3,119	124.8	87.3	76.4	0.64	1.17	2	5
								9,097	14,035	4,678	187.1	196.5	180.1	0.95	1.72		
								10,264	16,375	5,458	218.3	267.5	286.6	1.25	2.27	3	7
								12,496	21,053	7,018	280.7	442.1	466.7	1.56	2.83		
								14,612	25,732	8,577	343.1	660.4	690.5	1.87	3.39		
								16,646	30,410	10,137	405.5	922.4	957.9	2.18	3.94		
								18,612	35,089	11,696	467.8	1228.1	1187.2	2.49	4.50		
15	42	29	26	37	1*50	30	M6	13,923	21,053	7,018	315.8	2525.6	221.1	1.31	2.39	3	6
								16,592	26,316	8,772	394.7	394.7	434.2	1.93	3.50		
								21,592	36,842	12,281	552.6	773.7	828.9	2.56	4.61	4	8
								26,285	47,369	15,790	710.5	1279.0	1207.9	3.16	5.70		
								30,744	57,895	19,298	868.4	1910.5	1823.7	3.78	6.81		
								35,024	68,421	22,807	1026.3	2668.4	2565.8	4.41	7.93		
								39,160	78,948	26,316	1184.2	3552.6	3434.2	5.03	9.04		
21	68.4	38.3	46	49.5	1*100	55	M8	46,991	72,741	24,247	1745.8	1697.3	1527.6	5.35	9.30	3	7
								61,165	101,838	33,946	2444.1	3326.7	3564.3	7.96	13.79		
								67,898	116,386	38,795	2793.3	4345.1	4073.5	10.47	18.18	4	8
								80,829	145,482	48,494	3491.6	6789.2	6449.7	13.06	22.66		
								93,191	158,400	52800	2640.0	8870.4	8500.8	15.65	27.14		

GOORB / GOORB - N / GOORB - B

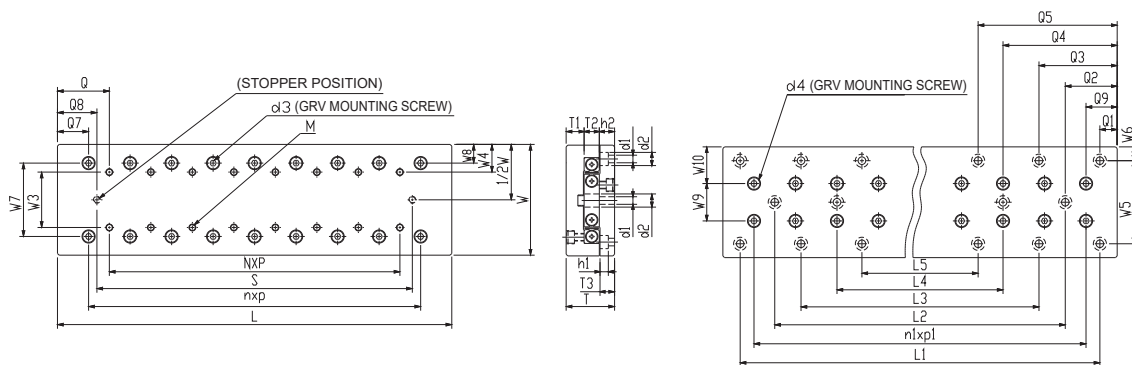


Specification

Model No.			Max. Stroke (mm)	Roller Dia. (mm)	Main Dimensions (mm)					Table Mounting Dimensions (mm)																									
Standard	Antirust	Black Coating			W	T	L	T ₁	T ₂	T ₃	N*P	n*p	M	S	d ₃	Q	Q ₇	Q ₈	W ₃	W ₄	W ₇	W ₈	L ₁	L ₂	L ₃	n ₁ *p ₁									
GOORB30-25	GOORB30-25-N	GOORB30-25-B	12	Ø1.5	30±0.1	17±0.1	55	7	4	5.5	3*10	4*10	M2	40	4.1	12.5	7.5	7.5	10	10	18.4	5.8	48	/	28	4*10									
GOORB30-35	GOORB30-35-N	GOORB30-35-B	18																								35	1*10	2*10	26	4.5	28	2*10		
GOORB30-45	GOORB30-45-N	GOORB30-45-B	25																								45	2*10	3*10	33	6	38	3*10		
GOORB30-55	GOORB30-55-N	GOORB30-55-B	32																								65	4*10	5*10	48	8.5	58	5*10		
GOORB30-65	GOORB30-65-N	GOORB30-65-B	40																								75	5*10	6*10	53	11	68	6*10		
GOORB30-75	GOORB30-75-N	GOORB30-75-B	45																								85	6*10	7*10	58	13.5	78	7*10		
GOORB30-85	GOORB30-85-N	GOORB30-85-B	50																								85	6*10	7*10	58	13.5	78	7*10		
GOORB40-35	GOORB40-35-N	GOORB40-35-B	18	Ø2.0	40±0.1	21±0.1	80	7	8	6.5	/	1*15	M3	29	6	10	3	15	9.5	15	12.5	25.5	7.25	70	/	40	2*25								
GOORB40-50	GOORB40-50-N	GOORB40-50-B	30																									50	1*15	1*25	41	12.5	4.5	40	1*25
GOORB40-65	GOORB40-65-N	GOORB40-65-B	40																									65	2*15	2*25	51	20	7	55	1*25
GOORB40-80	GOORB40-80-N	GOORB40-80-B	50																									95	4*15	2*25	71	22.5	12	85	2*25
GOORB40-95	GOORB40-95-N	GOORB40-95-B	60																									110	5*15	3*25	81	17.5	14.5	100	3*25
GOORB40-110	GOORB40-110-N	GOORB40-110-B	70																									125	6*15	3*25	91	25	17	115	3*25
GOORB40-125	GOORB40-125-N	GOORB40-125-B	80																									125	6*15	3*25	91	25	17	115	3*25
GOORB60-55	GOORB60-55-N	GOORB60-55-B	30	Ø3.0	60±0.1	28±0.1	130	10.5	8	9	/	1*25	M4	89	7.5	27.5	15	20.5	25	17.5	39	10.5	110	/	110	4*25									
GOORB60-80	GOORB60-80-N	GOORB60-80-B	45																								80	1*25	2*25	59	10.5	60	2*25		
GOORB60-105	GOORB60-105-N	GOORB60-105-B	60																								105	2*25	3*25	74	15.5	85	3*25		
GOORB60-130	GOORB60-130-N	GOORB60-130-B	75																								155	4*25	5*25	104	25.5	135	5*25		
GOORB60-155	GOORB60-155-N	GOORB60-155-B	90																								180	5*25	6*25	119	30.5	160	6*25		
GOORB60-180	GOORB60-180-N	GOORB60-180-B	105																								205	6*25	7*25	144	30.5	185	7*25		
GOORB60-205	GOORB60-205-N	GOORB60-205-B	130																								205	6*25	7*25	144	30.5	185	7*25		

Ordering Example :	GOORB	30	25	N
	B type table	Table width	Table length	Antirust

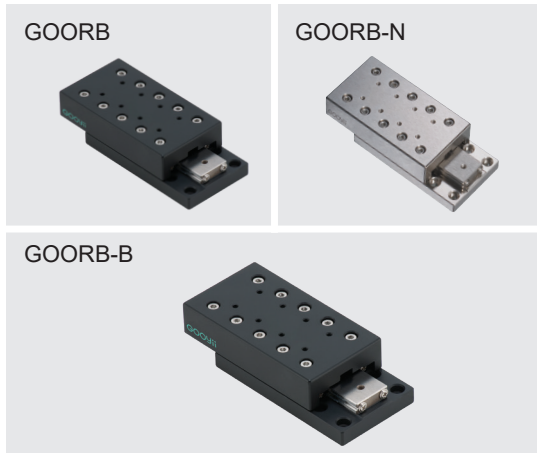
GOORB / GOORB - N / GOORB - B



Specification

Model No.			Max. Stroke (mm)	Roller Dia. (mm)	Main Dimensions (mm)					Table Mounting Dimensions (mm)																						
Standard	Antirust	Black Coating			W	T	L	T ₁	T ₂	T ₃	n*N	n*p	M	S	d ₃	Q	Q ₇	Q ₈	W ₃	W ₄	W ₇	W ₈	L ₁	L ₂	L ₃	L ₄	L ₅	n*p ₁				
GOORB80-85	GOORB80-85-N	GOORB80-85-B	50	Ø4.0	80±0.1	35±0.1	13	11	10.5	/	1*40	M5	149	9.5	42.5	22.5	28	40	20	53	13.5	160	/	80	/	/	/	1*40				
GOORB80-125	GOORB80-125-N	GOORB80-125-B	75							125	1*40																	2*40	89	18	80	2*40
GOORB80-165	GOORB80-165-N	GOORB80-165-B	105							165	2*40																	3*40	119	23	120	3*40
GOORB80-205	GOORB80-205-N	GOORB80-205-B	135							205	3*40																	4*40	149	28	160	4*40
GOORB80-245	GOORB80-245-N	GOORB80-245-B	155							245	4*40																	5*40	169	38	200	5*40
GOORB80-285	GOORB80-285-N	GOORB80-285-B	185							285	5*40																	6*40	199	43	240	6*40
GOORB80-325	GOORB80-325-N	GOORB80-325-B	215							325	6*40																	7*40	229	48	280	7*40
GOORB100-110	GOORB100-110-N	GOORB100-110-B	60							Ø6.0	100±0.1																	45±0.1	16	15	13	/
GOORB100-160	GOORB100-160-N	GOORB100-160-B	95	160	1*50	2*50	113	23.5	140			2*50																				
GOORB100-210	GOORB100-210-N	GOORB100-210-B	130	210	2*50	3*50	148	31	190			3*50																				
GOORB100-260	GOORB100-260-N	GOORB100-260-B	165	260	3*50	4*50	183	46	240			4*50																				
GOORB100-310	GOORB100-310-N	GOORB100-310-B	200	310	4*50	5*50	218	53.5	290			5*50																				
GOORB100-360	GOORB100-360-N	GOORB100-360-B	235	360	5*50	6*50	253	63.5	340			6*50																				
GOORB100-410	GOORB100-410-N	GOORB100-410-B	265	410	6*50	7*50	283	60	390			7*50																				
GOORB100-510	GOORB100-510-N	GOORB100-510-B	350	450	7*50	8*50	390	27	450			8*50																				
GOORB145-210	GOORB145-210-N	GOORB145-210-B	130	210	/	1*100	156	52	100			1*100																				
GOORB145-310	GOORB145-310-N	GOORB145-310-B	180	310	1*100	2*100	206	85	200			2*100																				
GOORB145-410	GOORB145-410-N	GOORB145-410-B	350	Ø9.0	145±0.1	60±0.1	410	21	22	16	2*100	3*100	M8	376	14	105	55	85	30	98	23.5	300	100	/	/	/	3*100					
GOORB145-510	GOORB145-510-N	GOORB145-510-B	450	510	3*100	4*100	476	17	400	4*100																						
GOORB145-610	GOORB145-610-N	GOORB145-610-B	550	610	4*100	5*100	576	500	300	5*100																						

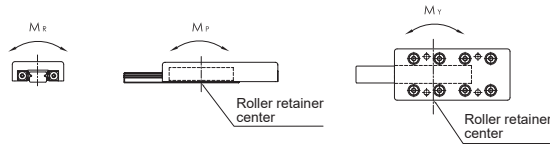
GOORB / GOORB - N / GOORB - B



Material Specification

Material Component Model No.	Table	Rail	Retainer	Roller
GOORB	Aluminum alloy +black anodized	SUJ2	SUS304	SUJ2
GOORB - N	S50C+Ni	SUJ2+Ni	SUS304	SUJ2
GOORB - B	S50C +phosphate	SUJ2	SUS304	SUJ2

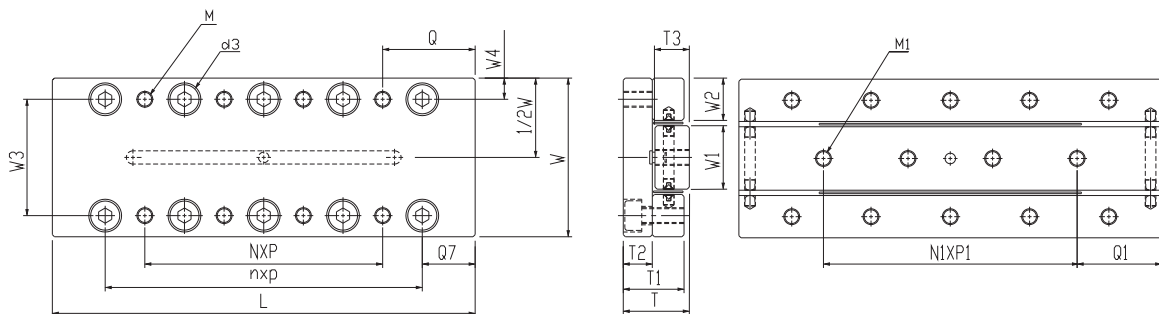
GOORB-N No Surface finished to V-groove surface of the rail.



★ Each of load and torque changes oppositely in stroke variation

Base Mounting Dimensions (mm)															Basic Dynamic Load Rating C(N)	Basic Static Load Rating Co(N)	Allow-Able Load Fu(N)	Static Rated Moment			Weight (kg)		Table Moving Accuracy (μm)			
Q ₁	Q ₂	Q ₃	Q ₄	Q ₅	Q ₉	W ₅	W ₆	W ₉	W ₁₀	d ₁	d ₂	d ₄	h ₁	h ₂				M _R (N·m)	M _P (N·m)	M _Y (N·m)	Standard	Antirust	Center Parallelism	Side Parallelism		
22.5	/	/	/	/	22.5	60	10	27	26.5	5.5	9.5	9.5	6	11	6,617	9,357	3,119	124.8	87.3	76.4	0.84	1.72	2	5		
															9,097	14,035	4,678	187.1	196.5	180.1	1.25	2.55			3	7
															10,264	16,375	5,458	218.3	267.5	286.6	1.65	3.37				
															12,492	21,053	7,018	280.7	442.1	466.7	2.06	4.18				
															14,612	25,732	8,577	343.1	660.4	690.5	2.46	5.00				
															16,646	30,410	10,137	405.5	922.4	957.9	2.87	5.83	4	8		
															18,612	35,089	11,696	467.8	1228.1	1187.2	3.27	6.64				
10	/	/	/	/	30	60	20	26	37	7	11	11	6.5	14	13,923	21,053	7,018	315.8	252.6	221.1	1.72	3.51	3	6		
															16,592	26,316	8,772	394.7	394.7	434.2	2.53	5.15			4	8
															21,596	36,842	12,281	552.6	773.7	828.9	3.34	6.79				
															26,285	47,369	15,790	710.5	1279.0	1207.9	4.13	8.39				
															30,744	57,895	19,298	868.4	1910.5	1823.7	4.95	10.04				
															35,024	68,421	22,807	1026.3	2668.4	2565.8	5.75	11.64	3	7		
															39,160	78,948	26,316	1184.2	3552.6	3434.2	6.56	13.28				
															45,141	84,600	28,200	1269.0	4568.4	4441.5	8.17	16.52				
55	/	/	/	/	55	90	27.5	46	49.5	9	14	14	8.5	17.5	46,991	72,741	24,247	1745.8	1697.3	1527.6	6.75	13.23	3	7		
															61,165	101,838	33,946	2444.1	3326.7	3564.3	10.03	19.62				
															67,898	116,386	38,795	2793.3	4345.1	4073.5	13.21	25.88	4	8		
															80,829	145,482	48,494	3491.6	6789.2	6449.7	16.48	32.26				
															87,562	160,030	53,343	3840.8	7807.6	6958.9	19.75	38.64				

GOORC / GOORC - N / GOORC - B



Specification

Model No.			Max. Stroke (mm)	Roller Dia. (mm)	Main Dimensions (mm)			Table Mounting Dimensions (mm)								
Standard	Antirust	Black Coating			W	T	L	W ₃	W ₄	N*P	Q	M	n*p	Q ₇	d ₃	T ₁
GOORC20-25	GOORC20-25-N	GOORC20-25-B	12	Ø1.5	20±0.1	8±0.1	14	3	1*18	3.5	M2.5	1*10	7.5	4.1	7.5	3.5
GOORC20-35	GOORC20-35-N	GOORC20-35-B	18						1*28			2*10				
GOORC20-45	GOORC20-45-N	GOORC20-45-B	25						1*20	3*10						
GOORC20-55	GOORC20-55-N	GOORC20-55-B	32						1*30	4*10						
GOORC30-65	GOORC30-65-N	GOORC30-65-B	40	Ø2.0	30±0.1	12±0.1	22	4	1*30	17.5	M3	3*15	10	6	11.5	5.5
GOORC30-80	GOORC30-80-N	GOORC30-80-B	50						1*45			4*15				
GOORC30-95	GOORC30-95-N	GOORC30-95-B	60						2*30			5*15				
GOORC40-105	GOORC40-105-N	GOORC40-105-B	60	Ø3.0	40±0.1	16±0.1	30	5	1*50	27.5	M4	3*25	15	7.5	15.5	7.5
GOORC40-130	GOORC40-130-N	GOORC40-130-B	75						1*75			4*25				
GOORC40-155	GOORC40-155-N	GOORC40-155-B	90						2*50			5*25				

Ordering Example :	GOORC	-	30	-	25	-	N
	C type table		Table width		Table length		Antirust

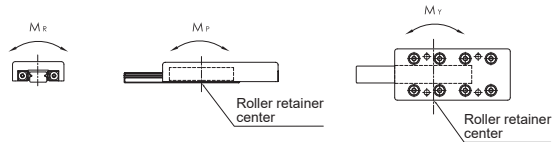
GOORC / GOORC - N / GOORC - B



Material Specification

Material Component Model No.	Table	Rail	Retainer	Roller
GOORC	Aluminum alloy +black anodized	SUJ2	SUS304	SUJ2
GOORC - N	S50C+Ni	SUJ2+Ni	SUS304	SUJ2
GOORC - B	S50C +phosphate	SUJ2	SUS304	SUJ2

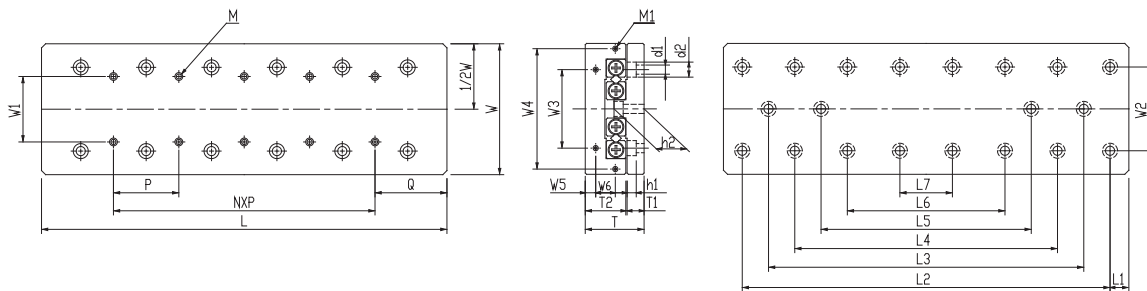
GOORC-N No Surface finished to V-groove surface of the rail.



★ Each of load and torque changes oppositely in stroke variation

Base Mounting Dimensions (mm)						Basic Dynamic Load Rating C(N)	Basic Static Load Rating Co(N)	Allow-Able Load Fu(N)	Static Rated Moment			Weight (kg)		Table Moving Accuracy (μm)	
W ₁	W ₂	N ₁ *P ₁	Q ₁	M ₁	T ₃				M _R (N·m)	M _P (N·m)	M _Y (N·m)	Standard	Antirust	Center Parallelism	Side Parallelism
7	6.5	2*7.5	5	M2.5	4	523	865	288	2.2	2.6	2.2	0.02	0.03	2	4
		2*10	7.5			657	1153	384	3.0	4.6	5.2	0.03	0.04		
		3*10				783	1441	480	3.7	7.2	7.9	0.03	0.05		
		4*10				903	1729	576	4.4	10.4	11.2	0.04	0.06		
12	9	3*15	10	M3	6	1849	2924	975	12.7	19.5	21.4	0.11	0.16	5	5
		4*15				2407	4093	1364	17.7	38.2	35.5	0.13	0.20		
		5*15				2672	4678	1559	20.3	49.9	46.8	0.16	0.24		
16	12	3*25	15	M4	8	5646	10655	3552	61.8	124.3	133.2	0.31	0.48	3	6
		4*25				6872	13700	4567	79.5	205.5	194.1	0.39	0.59		
		5*25				8038	16744	5581	97.1	307.0	293.0	0.46	0.70		

GOORM / GOORM - N / GOORM - B



Specification

Model No.			Max. Stroke (mm)	Roller Dia. (mm)	Main Dimensions (mm)				Table Mounting Dimensions (mm)				External Connection Mounting Dimensions (mm)									
Standard	Antirust	Black Coating			W	T	T ₂	L	W ₁	M	Q	N*P	W ₃	W ₄	W ₅	W ₆	M ₁	W ₂	d ₁	d ₂	h ₁	T ₁
GOORM30-25	GOORM30-25-N	GOORM30-25-B	12	Ø1.5	30±0.1	17±0.1	11	25	10	M2*4L	12.5	/	12	/	2.5	/	M2*6L	22	2.5	4.5	2.5	5.5
GOORM30-35	GOORM30-35-N	GOORM30-35-B	18					35				1*10										
GOORM30-45	GOORM30-45-N	GOORM30-45-B	25					45				2*10										
GOORM30-55	GOORM30-55-N	GOORM30-55-B	32					55				3*10										
GOORM30-65	GOORM30-65-N	GOORM30-65-B	40					65				4*10										
GOORM30-75	GOORM30-75-N	GOORM30-75-B	45					75				5*10										
GOORM30-85	GOORM30-85-N	GOORM30-85-B	50					85				6*10										
GOORM40-35	GOORM40-35-N	GOORM40-35-B	18					35				/										
GOORM40-50	GOORM40-50-N	GOORM40-50-B	30	50	1*15																	
GOORM40-65	GOORM40-65-N	GOORM40-65-B	40	65	2*15																	
GOORM40-80	GOORM40-80-N	GOORM40-80-B	50	80	3*15																	
GOORM40-95	GOORM40-95-N	GOORM40-95-B	60	95	4*15																	
GOORM40-110	GOORM40-110-N	GOORM40-110-B	70	Ø2.0	40±0.1	21±0.1	14	110	15	M3*6L	17.5	5*15	16	/	3.4	/	M2*6L	30	3.5	6.5	3.5	6.5
GOORM40-125	GOORM40-125-N	GOORM40-125-B	80					125				6*15										
GOORM40-140	GOORM40-140-N	GOORM40-140-B	90					140				7*15										
GOORM40-155	GOORM40-155-N	GOORM40-155-B	100					155				8*15										
GOORM40-170	GOORM40-170-N	GOORM40-170-B	110					170				9*15										
GOORM40-185	GOORM40-185-N	GOORM40-185-B	120					185				10*15										
GOORM60-55	GOORM60-55-N	GOORM60-55-B	30					55				/										
GOORM60-80	GOORM60-80-N	GOORM60-80-B	45					80				1*25										
GOORM60-105	GOORM60-105-N	GOORM60-105-B	60	105	2*25																	
GOORM60-130	GOORM60-130-N	GOORM60-130-B	75	130	3*25																	
GOORM60-155	GOORM60-155-N	GOORM60-155-B	90	155	4*25																	
GOORM60-180	GOORM60-180-N	GOORM60-180-B	105	Ø3.0	60±0.1	28±0.1	18.5	180	25	M4*8L	27.5	5*25	40	/	5.5	/	M3*6L	40	4.5	8	4.5	9
GOORM60-205	GOORM60-205-N	GOORM60-205-B	130					205				6*25										
GOORM60-230	GOORM60-230-N	GOORM60-230-B	155					230				7*25										
GOORM60-255	GOORM60-255-N	GOORM60-255-B	180					255				8*25										
GOORM60-280	GOORM60-280-N	GOORM60-280-B	205					280				9*25										
GOORM60-305	GOORM60-305-N	GOORM60-305-B	230					305				10*25										

Ordering Example :	GOORM	-	30	-	25	-	N
	M type table		Table width		Table length		Antirust

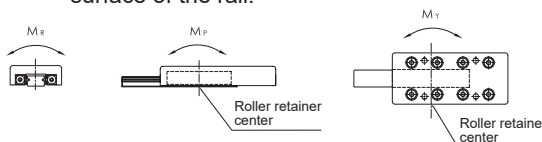
GOORM / GOORM - N / GOORM - B



Material Specification

Material Component Model No.	Table	Rail	Retainer	Roller
GOORM	Aluminum alloy +black anodized	SUJ2	SUS304	SUJ2
GOORM - N	S50C+Ni	SUJ2+Ni	SUS304	SUJ2
GOORM - B	S50C +phosphate	SUJ2	SUS304	SUJ2

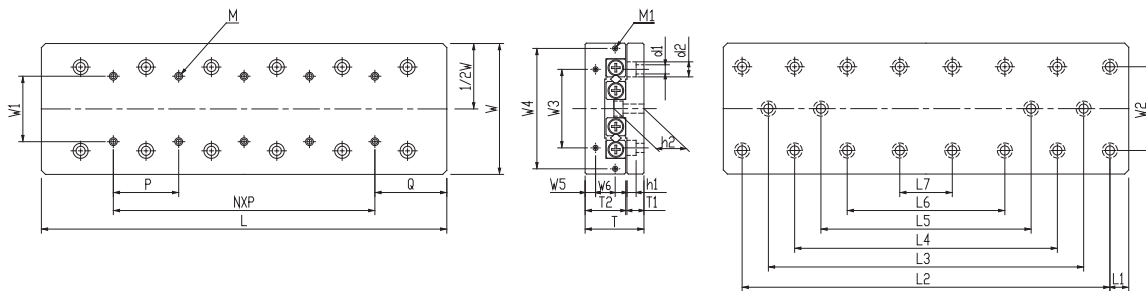
GOORM-N No Surface finished to V-groove surface of the rail.



★ Each of load and torque changes oppositely in stroke variation

Base Mounting Dimensions (mm)								Basic Dynamic Load Rating C(N)	Basic Static Load Rating Co(N)	Allow-Able Load Fu(N)	Static Rated Moment			Weight (kg)		Table Moving Accuracy (μm)	
h ₂	L ₁	L ₂	L ₃	L ₄	L ₅	L ₆	L ₇				M _R (N·m)	M _P (N·m)	M _V (N·m)	Standard	Antitrust	Center Parallelism	Side Parallelism
9	3.5	18	/	28	/	/	/	379	576	192	2.6	1.2	1.4	0.04	0.09	2	4
		28						523	865	288	3.9	2.6	3.0	0.05	0.12		
		38						657	1,153	384	5.2	4.6	5.2	0.07	0.16		
		48						783	1,441	480	6.5	7.2	7.9	0.08	0.19		
		58						903	1,729	576	7.8	10.4	11.2	0.10	0.23		
		68						1,131	2,306	769	10.4	18.4	17.3	0.12	0.27		
		78						1,240	2,594	865	11.7	23.3	22.0	0.13	0.30		
10.9	5	25	/	40	/	/	/	895	1,170	390	7.0	3.1	3.9	0.09	0.20	2	4
		40						1,552	2,339	780	14.0	12.5	10.9	0.13	0.29		
		55						1,849	2,924	975	17.5	19.5	17.5	0.17	0.38		
		70						2,134	3,509	1,170	21.1	28.1	30.4	0.21	0.46		
		85						2,407	4,093	1,364	24.6	38.2	40.9	0.25	0.55		
		100						2,930	5,263	1,754	31.6	63.2	59.6	0.30	0.64		
		115						3,181	5,848	1,949	35.1	78.0	74.1	0.34	0.73		
		130						3,427	6,433	2,144	38.6	94.3	98.6	0.38	0.82		
		145						3,668	7,017	2,339	42.1	112.3	117.0	0.42	0.91		
		160						4,136	8,187	2,729	49.1	152.8	147.4	0.46	1.00		
		175						4,365	8,772	2,924	52.6	175.4	169.6	0.50	1.08		
15	10	35	/	85	/	/	/	2,901	4,567	1,522	42.6	22.8	26.6	0.29	0.66	2	5
		60						4,338	7,611	2,537	71.0	63.4	57.1	0.43	0.96		
		85						5,646	10,655	3,552	99.5	124.3	115.4	0.57	1.26		
		110						6,268	12,178	4,059	113.7	162.4	172.5	0.71	1.57		
		135						7,462	15,222	5,074	142.1	253.7	266.4	0.84	1.87		
		160						8,603	18,266	6,089	170.5	365.3	350.1	0.98	2.17		
		185						9,157	19,789	6,596	184.7	428.8	445.2	1.12	2.47		
		210						9,702	21,311	7,104	198.9	497.3	515.0	1.25	2.77		
		235						10,767	24,355	8,118	227.3	649.5	629.2	1.39	3.07		
		260						11,288	25,877	8,626	241.5	733.2	711.6	1.53	3.37		
		285						11,802	27,400	9,133	255.7	822.0	844.8	1.66	3.68		

GOORM / GOORM - N / GOORM - B



Specification

Model No.			Max. Stroke (mm)	Roller Dia. (mm)	Main Dimensions (mm)				Table Mounting Dimensions (mm)				External Connection Mounting Dimensions (mm)									
Standard	Antirust	Black Coating			W	T	T ₂	L	W ₁	M	Q	N*P	W ₃	W ₄	W ₅	W ₆	M ₁	W ₂	d ₁	d ₂	h ₁	T ₁
GOORM80-85	GOORM80-85-N	GOORM80-85-B	50	4.0	80±0.1	35±0.1	24	85	40	M5*10L	42.5	/	55	/	6.5	/	M3*6L	55	5.5	10	5.4	10.5
GOORM80-125	GOORM80-125-N	GOORM80-125-B	75					125				1*40										
GOORM80-165	GOORM80-165-N	GOORM80-165-B	105					165				2*40										
GOORM80-205	GOORM80-205-N	GOORM80-205-B	130					205				3*40										
GOORM80-245	GOORM80-245-N	GOORM80-245-B	155					245				4*40										
GOORM80-285	GOORM80-285-N	GOORM80-285-B	185					285				5*40										
GOORM80-325	GOORM80-325-N	GOORM80-325-B	210					325				6*40										
GOORM80-365	GOORM80-365-N	GOORM80-365-B	235					365				7*40										
GOORM80-405	GOORM80-405-N	GOORM80-405-B	265					405				8*40										
GOORM100-110	GOORM100-110-N	GOORM100-110-B	60	6.0	100±0.1	45±0.1	31	110	50	M6*12L	55	/	60	92	8	15	M4*8L	60	7	11.5	7	13
GOORM100-160	GOORM100-160-N	GOORM100-160-B	95					160				1*50										
GOORM100-210	GOORM100-210-N	GOORM100-210-B	130					210				2*50										
GOORM100-260	GOORM100-260-N	GOORM100-260-B	165					260				3*50										
GOORM100-310	GOORM100-310-N	GOORM100-310-B	200					310				4*50										
GOORM100-360	GOORM100-360-N	GOORM100-360-B	235					360				5*50										
GOORM100-410	GOORM100-410-N	GOORM100-410-B	265					410				6*50										
GOORM100-460	GOORM100-460-N	GOORM100-460-B	300					460				7*50										
GOORM100-510	GOORM100-510-N	GOORM100-510-B	335					510				8*50										

Ordering Example :	GOORM	-	30	-	25	-	N
	M type table		Table width		Table length		Antirust

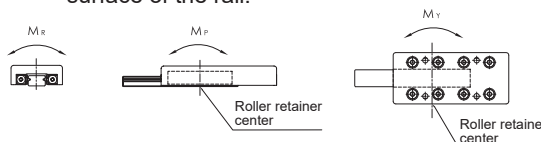
GOORM / GOORM - N / GOORM - B



Material Specification

Material Component Model No.	Table	Rail	Retainer	Roller
GOORM	Aluminum alloy +black anodized	SUJ2	SUS304	SUJ2
GOORM - N	S50C+Ni	SUJ2+Ni	SUS304	SUJ2
GOORM - B	S50C +phosphate	SUJ2	SUS304	SUJ2

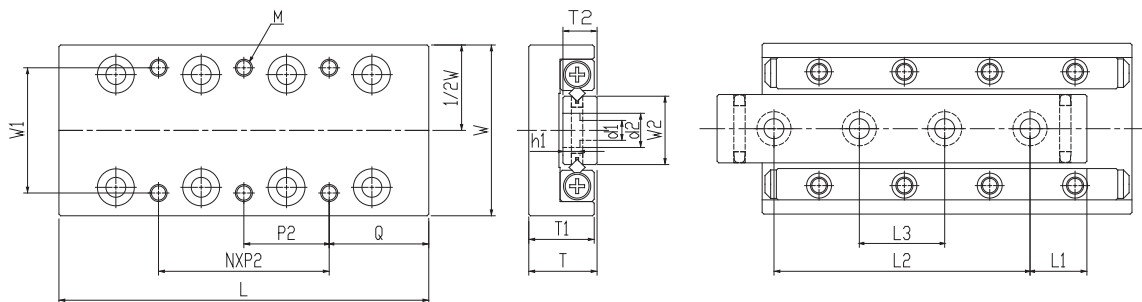
GOORM-N No Surface finished to V-groove surface of the rail.



★ Each of load and torque changes oppositely in stroke variation

Base Mounting Dimensions (mm)								Basic Dynamic Load Rating C(N)	Basic Static Load Rating Co(N)	Allow-Able Load Fu(N)	Static Rated Moment			Weight (kg)		Table Moving Accuracy (μm)			
h ₂	L ₁	L ₂	L ₃	L ₄	L ₅	L ₆	L ₇				M _R (N·m)	M _P (N·m)	M _Y (N·m)	Standard	Antirust	Center Parallelism	Side Parallelism		
10.5	10.5	65	/	/	/	/	/	6,617	9,357	3,119	124.8	87.3	76.4	0.76	1.69	2	5		
		105						9,097	14,035	4,678	187.1	196.5	180.1	1.12	2.50			3	6
		145						10,264	16,375	5,458	218.3	267.5	286.6	1.48	3.31				
		185	105	12,492	21,053	7,018	280.7	442.1	466.7	1.84	4.11	7							
		225	145	14,612	25,732	8,577	343.1	660.4	690.5	2.20	4.91								
		265	185	16,646	30,410	10,137	405.5	922.4	957.9	2.56	5.72								
		305	225	185	18,612	35,089	11,696	467.8	1228.1	1269.0	2.92	6.51	4	8					
		345	265	185	20,519	39,767	13,256	530.2	1577.4	1623.8	3.28	7.32							
		385	305	225	22,377	44,445	14,815	592.6	1970.4	1918.6	3.65	8.13							
23	10	90	/	/	/	/	/	13,923	21,053	7,018	315.8	252.6	221.1	1.60	3.48	3	6		
		140						16,592	26,316	8,772	394.7	394.7	434.2	2.36	5.10				
		190						90	21,596	36,842	12,281	552.6	773.7	828.9	3.11			6.70	7
		240	140	26,285	47,369	15,790	710.5	1279.0	1207.9	3.86	8.32								
		290	190	30,744	57,895	19,298	868.4	1910.5	1823.7	4.62	9.94	4	8						
		340	240	35,024	68,421	22,807	1026.3	2688.4	2565.8	5.36	11.53								
		390	290	39,160	78,948	26,316	1184.2	3552.6	3434.2	6.12	13.15								
		440	340	240	41,181	84,211	28,070	1263.2	4042.1	4168.4	6.87	14.76							
		490	390	290	45,141	94,737	31,579	1421.1	5115.8	5257.9	7.62	16.36							

GOORH / GOORH - N / GOORH - B



Specification

Model No.			Max. Stroke (mm)	Roller Dia. (mm)	Main Dimensions (mm)					Table Mounting Dimensions (mm)								
Standard	Antirust	Black Coating			W	T	L	T ₁	T ₂	W ₂	W ₁	M	Q	N*P ₂	d ₁	d ₂		
GOORH20-25	GOORH20-25-N	GOORH20-25-B	12	Ø1.5	20±0.1	8±0.1	25	7.5	4	6.6	14	M2.5*3.5L	3.5	1*18	2.5	4.1		
GOORH20-35	GOORH20-35-N	GOORH20-35-B	18														35	1*28
GOORH20-45	GOORH20-45-N	GOORH20-45-B	25														45	1*20
GOORH20-55	GOORH20-55-N	GOORH20-55-B	32														55	1*30
GOORH20-65	GOORH20-65-N	GOORH20-65-B	40														65	2*20
GOORH20-75	GOORH20-75-N	GOORH20-75-B	45														75	1*30
GOORH20-85	GOORH20-85-N	GOORH20-85-B	50														85	2*30
GOORH30-35	GOORH30-35-N	GOORH30-35-B	18														Ø2.0	30±0.1
GOORH30-50	GOORH30-50-N	GOORH30-50-B	30	50	1*43													
GOORH30-65	GOORH30-65-N	GOORH30-65-B	40	65	1*30													
GOORH30-80	GOORH30-80-N	GOORH30-80-B	50	80	1*45													
GOORH30-95	GOORH30-95-N	GOORH30-95-B	60	95	2*30													
GOORH30-110	GOORH30-110-N	GOORH30-110-B	70	110	1*45													
GOORH30-125	GOORH30-125-N	GOORH30-125-B	80	125	2*45													
GOORH40-55	GOORH40-55-N	GOORH40-55-B	30	Ø3.0	40±0.1	16±0.1	55	15.5	8	16	30	M4*7.5L	7.5	1*40	4.5	7.1		
GOORH40-80	GOORH40-80-N	GOORH40-80-B	45														80	1*65
GOORH40-105	GOORH40-105-N	GOORH40-105-B	60														105	1*50
GOORH40-130	GOORH40-130-N	GOORH40-130-B	75														130	1*75
GOORH40-155	GOORH40-155-N	GOORH40-155-B	90														155	2*50
GOORH40-180	GOORH40-180-N	GOORH40-180-B	105														180	1*75
GOORH40-205	GOORH40-205-N	GOORH40-205-B	130														205	2*75

Ordering Example :	GOORH	-	30	-	25	-	N
	H type table		Table width		Table length		Antirust

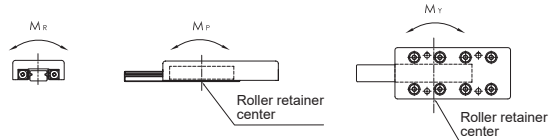
GOORH / GOORH - N / GOORH - B



Material Specification

Material Model No.	Table	Rail	Retainer	Roller
GOORH	Aluminum alloy +black anodized	SUJ2	SUS304	SUJ2
GOORH - N	S50C+Ni	SUJ2+Ni	SUS304	SUJ2
GOORH - B	S50C +phosphate	SUJ2	SUS304	SUJ2

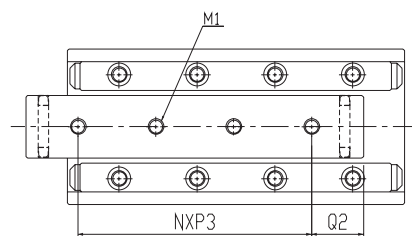
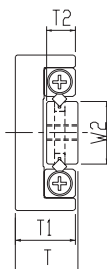
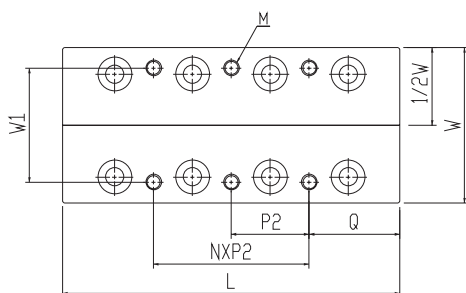
GOORH-N No Surface finished to V-groove surface of the rail.



★ Each of load and torque changes oppositely in stroke variation

Base Mounting Dimensions (mm)				Basic Dynamic Load Rating C(N)	Basic Static Load Rating Co(N)	Allow-Able Load Fu(N)	Static Rated Moment			Weight (kg)		Table Moving Accuracy (μm)	
h ₁	L ₁	L ₂	L ₃				M _R (N·m)	M _P (N·m)	M _V (N·m)	Standard	Antirust	Center Parallelism	Side Parallelism
2.2	3.5	18	/	379	576	192	1.4	1.2	1.4	0.01	0.02	2	4
	5	25		523	865	288	2.2	2.6	3.0	0.02	0.03		
	3.5	38	25	657	1,153	384	2.9	4.6	5.2	0.03	0.04	5	
		48	29	783	1,441	480	3.6	7.2	7.9	0.03	0.05		
	5	55	31	903	1,729	576	4.3	10.4	11.2	0.04	0.06		
		65	35	1,131	2,306	769	5.8	18.4	17.3	0.05	0.08		
75		40	1,240	2,594	865	6.5	23.3	22.0	0.05	0.09			
3.3	5	25	/	895	1,170	390	5.1	3.1	3.9	0.05	0.05		2
	7.5	35		1,552	2,339	780	10.1	12.5	10.9	0.07	0.12		
	5	55	33	1,849	2,924	975	12.7	19.5	17.5	0.09	0.15	5	
		70	40	2,164	3,509	1,170	15.2	28.1	30.4	0.11	0.19		
		85	45	2,407	4,093	1,364	17.7	38.2	40.9	0.14	0.23		
	7.5	95	50	2,930	5,263	1,754	22.8	63.2	59.6	0.16	0.26		
110		55	3,181	5,848	1,949	25.3	78.0	74.1	0.18	0.30			
4.3	7.5	40	/	2,901	4,567	1,522	26.5	22.8	26.6	0.15	0.24		2
	6	65	43	4,338	7,611	2,537	44.1	63.4	57.1	0.21	0.35		
	7.5	90	55	5,646	10,655	3,552	61.8	124.3	115.4	0.28	0.46	3	
		115	65	6,268	12,178	4,059	70.6	162.4	172.5	0.35	0.57		
		140	95	7,462	15,222	5,074	88.3	253.7	266.4	0.42	0.68		
		165	85	8,603	18,266	6,089	105.9	365.3	350.1	0.49	0.80		
190	90	9,157	19,789	6,596	114.8	428.8	445.2	0.56	0.91				

GOORS / GOORS - N / GOORS - B



Specification

Model No.			Max. Stroke (mm)	Roller Dia. (mm)	Main Dimensions (mm)					Table Mounting Dimensions (mm)				
Standard	Antirust	Black Coating			W	T	L	T ₁	T ₂	W ₂	W ₁	M	Q	N*P ₂
GOORS20-25	GOORS20-25-N	GOORS20-25-B	12	Ø1.5	20±0.1	8±0.1	25	7.5	4	6.6	14	M2.5*3.5L	3.5	1*18
GOORS20-35	GOORS20-35-N	GOORS20-35-B	18				35							2*28
GOORS20-45	GOORS20-45-N	GOORS20-45-B	25				45						1*20	
GOORS20-55	GOORS20-55-N	GOORS20-55-B	32				55						1*30	
GOORS20-65	GOORS20-65-N	GOORS20-65-B	40				65						2*20	
GOORS20-75	GOORS20-75-N	GOORS20-75-B	45				75						22.5	1*30
GOORS20-85	GOORS20-85-N	GOORS20-85-B	50				85						12.5	2*30
GOORS30-35	GOORS30-35-N	GOORS30-35-B	18				Ø2.0						30±0.1	12±0.1
GOORS30-50	GOORS30-50-N	GOORS30-50-B	30	50	1*43									
GOORS30-65	GOORS30-65-N	GOORS30-65-B	40	65	1*30									
GOORS30-80	GOORS30-80-N	GOORS30-80-B	50	80	17.5	1*45								
GOORS30-95	GOORS30-95-N	GOORS30-95-B	60	95	2*30									
GOORS30-110	GOORS30-110-N	GOORS30-110-B	70	110	32.5	1*45								
GOORS30-125	GOORS30-125-N	GOORS30-125-B	80	125	17.5	2*45								
GOORS40-55	GOORS40-55-N	GOORS40-55-B	30	Ø3.0	40±0.1	16±0.1		55	15.5	8	16	30		
GOORS40-80	GOORS40-80-N	GOORS40-80-B	45				80	1*65						
GOORS40-105	GOORS40-105-N	GOORS40-105-B	60				105	1*50						
GOORS40-130	GOORS40-130-N	GOORS40-130-B	75				130	27.5					1*75	
GOORS40-155	GOORS40-155-N	GOORS40-155-B	90				155	2*50						
GOORS40-180	GOORS40-180-N	GOORS40-180-B	105				180	52.5					1*75	
GOORS40-205	GOORS40-205-N	GOORS40-205-B	130				205	27.5					2*75	

Ordering Example :	GOORS	-	30	-	25	-	N
	S type table		Table width		Table length		Antirust

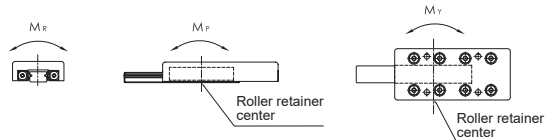
GOORS / GOORS - N / GOORS - B



Material Specification

Component Material Model No.	Table	Rail	Retainer	Roller
GOORS	Aluminum alloy +black anodized	SUJ2	SUS304	SUJ2
GOORS - N	S50C+Ni	SUJ2+Ni	SUS304	SUJ2
GOORS - B	S50C +phosphate	SUJ2	SUS304	SUJ2

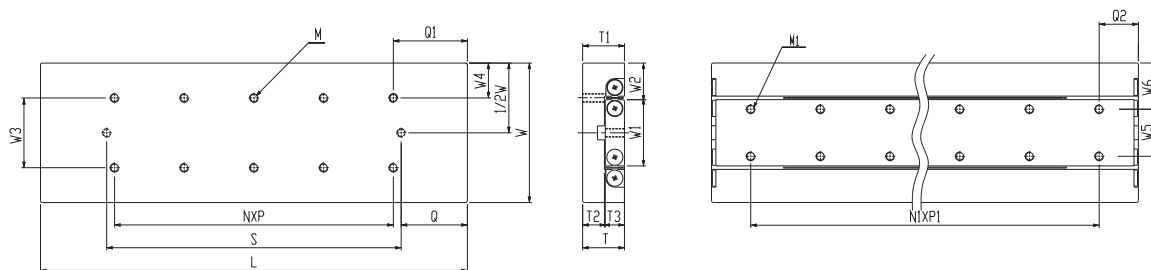
GOORS-N No Surface finished to V-groove surface of the rail.



★ Each of load and torque changes oppositely in stroke variation

Base Mounting Dimensions (mm)			Basic Dynamic Load Rating C(N)	Basic Static Load Rating Co(N)	Allow-able Load Fu(N)	Static Rated Moment			Weight (kg)		Table Moving Accuracy (μm)	
M1	Q ₂	N*P ₃				M _R (N·m)	M _P (N·m)	M _V (N·m)	Standard	Antirust	Center Parallelism	Side Parallelism
M2.6	5	2*7.5	379	576	192	1.4	1.2	1.4	0.01	0.02	2	4
		7.5	2*10	523	865	288	2.2	2.6	3.0	0.02		
	7.5	3*10	657	1,153	384	2.9	4.6	5.2	0.03	0.05	2	5
		4*10	783	1,441	480	3.6	7.2	7.9	0.03	0.06		
		5*10	903	1,729	576	4.3	10.4	11.2	0.04	0.07		
		6*10	1,131	2,306	769	5.8	18.4	17.3	0.05	0.08		
M3	7.5	1*20	895	1,170	390	5.1	3.1	3.9	0.05	0.05	2	4
		10	2*15	1,552	2,339	780	10.1	12.5	10.9	0.07		
	10	3*15	1,849	2,924	975	12.7	19.5	17.5	0.10	0.16	2	5
		4*15	2,134	3,509	1,170	15.2	28.1	30.4	0.12	0.19		
		5*15	2,407	4,093	1,364	17.7	38.2	40.9	0.14	0.23		
		6*15	2,930	5,263	1,754	22.8	63.2	59.6	0.16	0.27		
M4	10	1*35	2,901	4,567	1,522	26.5	22.8	26.6	0.15	0.24	2	5
		15	2*25	4,338	7,611	2,537	44.1	63.4	57.1	0.22		
	15	3*25	5,646	10,655	3,552	61.8	124.3	115.4	0.29	0.46	3	5
		4*25	6,268	12,178	4,059	70.6	162.4	172.5	0.36	0.58		
		5*25	7,462	15,222	5,074	88.3	259.7	266.4	0.42	0.69		
		6*25	8,603	18,266	6,089	105.9	365.3	350.1	0.49	0.80		
7*25	9,157	19,789	6,596	114.8	428.8	445.2	0.56	0.91				

GOORA - S



Specification

Model No.	Max. Stroke (mm)	Roller Dia. (mm)	Main Dimensions (mm)			Mounting Dimensions (mm)									
			W	T	L	W ₃	W ₄	Q	S	N*P	M	Q1	T ₁	T ₂	T ₃
GOORA30-25-S	12	Ø1.5	30±0.1	8±0.1	25	10	10	12.5	2.5	/	M2	20	11	7	4
GOORA30-35-S	18				35				4.5	1*10		26			
GOORA30-45-S	25				45				6	2*10		33			
GOORA30-55-S	32				55				7.5	3*10		40			
GOORA30-65-S	40				65				8.5	4*10		48			
GOORA30-75-S	45				75				11	5*10		53			
GOORA30-85-S	50				85				13.5	6*10		58			
GOORA40-35-S	18	Ø2.0	40±0.1	14±0.1	35	15	12.5	17.5	3	/	M3	29	14	8	6
GOORA40-50-S	30	50		4.5	1*15				41						
GOORA40-65-S	40	65		7	2*15				51						
GOORA40-80-S	50	80		9.5	3*15				61						
GOORA40-95-S	60	95		12	4*15				71						
GOORA40-110-S	70	110		14.5	5*15				81						
GOORA40-125-S	80	125		17	6*15				91						
GOORA60-55-S	30	Ø3.0	60±0.1	18.5±0.1	55	25	17.5	27.5	5.5	/	M4	44	18.5	10.5	8
GOORA60-80-S	45				80				10.8	1*25		59			
GOORA60-105-S	60				105				15.5	2*25		74			
GOORA60-130-S	75				130				20.8	3*25		89			
GOORA60-155-S	90				155				25.5	4*25		104			
GOORA60-180-S	105				180				30.5	5*25		119			
GOORA60-205-S	130				205				30.5	6*25		144			

Ordering Example :

GOORA -
 30 -
 25 -
 S
 A type table - Table width - Table length - Corrosion Resistance

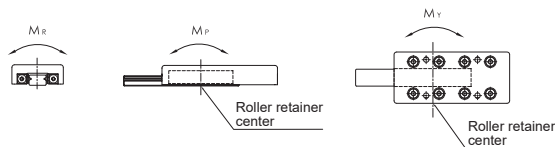
GOORA - S



Material Specification

Component	Table	Rail	Retainer	Roller
Material Model No.				
GOORA - S	SUS440C+Ni		SUS304	SUS440C

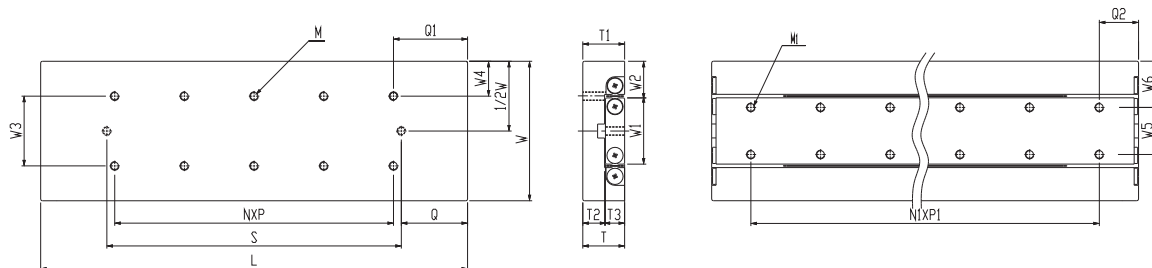
Table and rail are in one unit in this series.
GRA-S No Surface finished to V-groove surface of the rail.



★ Each of load and torque changes oppositely in stroke variation

W ₁	W ₂	W ₅	W ₆	N ₁ *P ₁	Q ₂	M ₁	Basic Dynamic Load Rating C(N)	Basic Static Load Rating Co(N)	Allow-Able Load Fu(N)	Static Rated Moment			Weight (kg)	Table Moving Accuracy (μm)		
										M _R (N·m)	M _P (N·m)	M _V (N·m)		Center Parallelism	Side Parallelism	
12.8	8.6	/	15	1*10	7.5	M2	379	576	192	2.6	1.2	1.4	0.09	2	4	
				2*10			523	865	288	3.9	2.6	3.0				
				3*10			657	1,153	384	5.2	4.6	5.2				
				4*10			783	1,441	480	6.5	7.2	7.9				
				5*10			903	1,729	576	7.8	10.4	11.2				
				6*10			1,131	2,306	769	10.4	18.4	17.3				
				7*10			1,240	2,594	865	11.7	23.3	22.0				
17	11.5	/	20	1*15	10	M3	895	1,170	390	7.0	3.1	3.9	0.20	2	4	
2*15	2,901			4,567			1,522	42.6	22.8	26.6						
13.1	13.5			2*15	17.5		2,901	4,567	1,522	42.6	22.8	19.0	0.36	0.46	3	6
				4*15	10		4,338	7,611	2,591	71.0	63.4	57.1				
				4*15	17.5		3,640	6,089	2,030	56.8	40.6	45.7				
				5*15			5,005	9,133	3,044	85.2	91.3	98.9				
				5*15			25	5,005	9,133	3,044	85.2	91.3	83.7			
26.6	16.7	17	21.5	1*25	15	M4	2,901	4,567	1,522	42.6	22.8	26.6	0.65	2	5	
				2*25			4,338	7,611	2,537	71.0	63.4	57.1				
				3*25			5,646	10,655	3,552	99.5	124.3	115.4				
				4*25			6,268	12,178	4,059	113.7	162.4	172.5				
				5*25			7,462	15,222	5,074	142.1	253.7	266.4				
				6*25			8,603	18,266	6,089	170.5	365.3	350.1				
				7*25			9,157	19,789	6,596	184.7	428.8	445.2				

GOORA - S



Specification

Model No.	Max. Stroke (mm)	Roller Dia. (mm)	Main Dimensions (mm)			Mounting Dimensions (mm)									
			W	T	L	W ₃	W ₄	Q	S	N*P	M	Q1	T ₁	T ₂	T ₃
GOORA80-85-S	50	Ø4.0	80±0.1	24±0.1	85	40	20	42.5	10.5	/	M5	64	24	13	11
GOORA80-125-S	75				125				18	1*40		89			
GOORA80-165-S	105				165				23	2*40		119			
GOORA80-205-S	135				205				28	3*40		149			
GOORA80-245-S	155				245				38	4*40		169			
GOORA80-285-S	185				285				43	5*40		199			
GOORA80-325-S	215				325				48	6*40		229			
GOORA100-110-S	60				Ø6.0				100±0.1	31±0.1		110			
GOORA100-160-S	95	160	23.5	1*50		113									
GOORA100-210-S	130	210	31	2*50		148									
GOORA100-260-S	165	260	38.5	3*50		183									
GOORA100-310-S	200	310	46	4*50		218									
GOORA100-360-S	235	360	53.5	5*50		253									
GOORA100-410-S	265	410	63.5	6*50		283									
GOORA100-510-S	340	510	81	7*50		348									
GOORA145-210-S	130	Ø9.0	145±0.1	42.5±0.1	210	85	30	105	27	/	M8	156	43	21	21
GOORA145-310-S	180				310				52	1*100		206			
GOORA145-410-S	350				410				12	2*100		376			
GOORA145-510-S	450				510				17	3*100		476			
GOORA145-610-S	550				610					4*100		576			

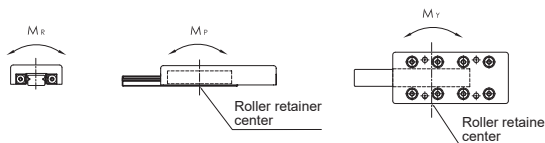
GOORA - S



Material Specification

Component Material Model No.	Table	Rail	Retainer	Roller
GOORA - S	SUS440C+Ni		SUS304	SUS440C

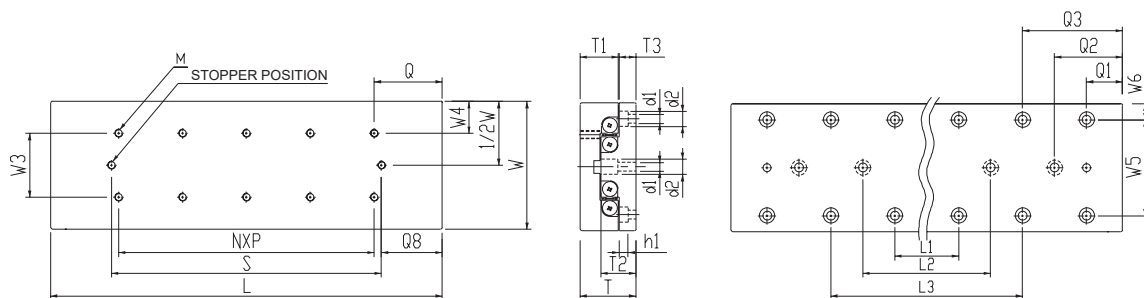
Table and rail are in one unit in this series.
GRA-S No Surface finished to V-groove surface of the rail.



★ Each of load and torque changes oppositely in stroke variation

W ₁	W ₂	W ₅	W ₆	N ₁ *P ₁	Q ₂	M ₁	Basic Dynamic Load Rating C(N)	Basic Static Load Rating Co(N)	Allow-Able Load Fu(N)	Static Rated Moment			Weight (kg)	Table Moving Accuracy (μm)							
										M _R (N·m)	M _P (N·m)	M _Y (N·m)		Center Parallelism	Side Parallelism						
38	21	27	26.5	1*40	22.5	M5	6,617	9,357	3,119	124.8	87.3	76.4	1.14	2	5						
				2*40			9,097	14,035	4,678	187.1	196.5	180.1	1.68								
				3*40			10,264	16,375	5,458	218.3	267.5	286.6	2.22								
				38			21	27	26.5	4*40	22.5	M5	12,492	21,053	7,018	280.7	442.1	466.7	2.76	3	7
										5*40			14,612	25,732	8,577	343.1	660.4	690.5	3.30		
										6*40			16,646	30,410	10,137	405.5	922.4	957.9	3.84		
										7*40			18,612	35,089	11,696	467.8	1228.1	1187.2	4.38		
42	29	26	37	1*50	30	M6	13,923	21,053	7,018	315.8	252.6	221.1	2.33	3	6						
				2*50			16,592	26,316	8,772	394.7	394.7	434.2	3.42								
				3*50			21,596	36,842	12,281	552.6	773.7	828.9	4.51								
				4*50			26,285	47,369	15,790	710.5	1279.0	1207.9	5.57								
				42			29	26	37	5*50	30	M6	30,744	57,895	19,298	868.4	1910.5	1823.7	6.66	4	8
										6*50			35,024	68,421	22,807	1026.3	2668.4	2565.8	7.75		
										7*50			39,160	78,948	26,316	1184.2	3552.6	3434.2	8.84		
										8*50			47,576	100,001	33,334	1500.0	5194.7	5044.7	11.02		
68.4	38.3	46	49.5	1*100	55	M8	46,991	72,741	24,247	1745.8	1697.3	1527.6	9.08	3	7						
				2*100			61,165	101,838	33,946	2444.1	3326.7	3564.3	13.46								
				3*100			67,898	116,386	38,795	2793.3	4345.1	4073.5	17.74	4	8						
				4*100			80,829	145,482	48,494	3491.6	6789.2	6449.7	22.11								
				5*100			87,073	160,031	53,344	3840.7	8214.9	8588.3	26.47								

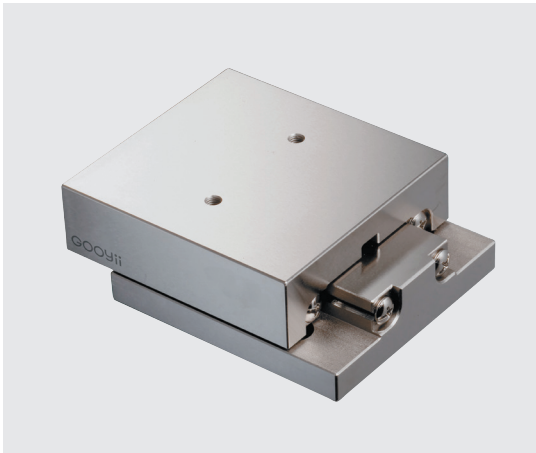
GOORB - S



Specification

Model No.	Max. Stroke (mm)	Roller Dia. (mm)	Main Dimensions (mm)			Mounting Dimensions (mm)													
			W	T	L	T ₁	T ₂	T ₃	N*P	M	S	Q	Q ₈	W ₃	W ₄	L ₁	L ₂	L ₃	
GOORB30-25-S	12	Ø1.5	30±0.1	17±0.1	25	11	10	5.5	/	M2	20	12.5	2.5	10	10	18	/	28	
GOORB30-35-S	18				35				1*10		26		4.5						
GOORB30-45-S	25				45				2*10		33		6			38			
GOORB30-55-S	32				55				3*10		40		7.5			48			28
GOORB30-65-S	40				65				4*10		48		8.5			58			38
GOORB30-75-S	45				75				5*10		53		11			68			45
GOORB30-85-S	50				85				6*10		58		13.5			78			58
GOORB40-35-S	18	Ø2.0	40±0.1	21±0.1	35	8	13	6.5	/	M3	29	17.5	3	15	12.5	25	/	40	
GOORB40-50-S	30	50			1*15	41	4.5	40											
GOORB40-65-S	40	65			2*15	51	7	55											
GOORB40-80-S	50	80			3*15	61	9.5	70	40										
GOORB40-95-S	60	95			4*15	71	12	85	55										
GOORB40-110-S	70	110			5*15	81	14.5	100	70										
GOORB40-125-S	80	125			6*15	91	17	115	85										
GOORB60-55-S	30	Ø3.0	60±0.1	28±0.1	55	18.5	17.5	9	/	M4	44	27.5	5.5	25	17.5	35	/	85	
GOORB60-80-S	45				80				1*25		59		10.8			60			
GOORB60-105-S	60				105				2*25		74		15.5			85			
GOORB60130-S	75				130				3*25		89		20.8			110			85
GOORB60-155-S	90				155				4*25		104		25.5			135			110
GOORB60-180-S	105				180				5*25		119		30.5			160			135
GOORB60-205-S	130				205				6*25		144		30.5			185			135

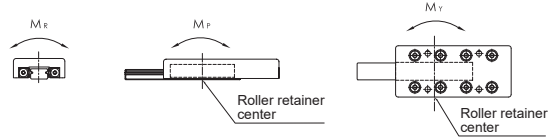
GOORB - S



Material Specification

Component Material Model No.	Table	Rail	Retainer	Roller
GOORB - S	SUS440C+Ni		SUS304	SUS440C

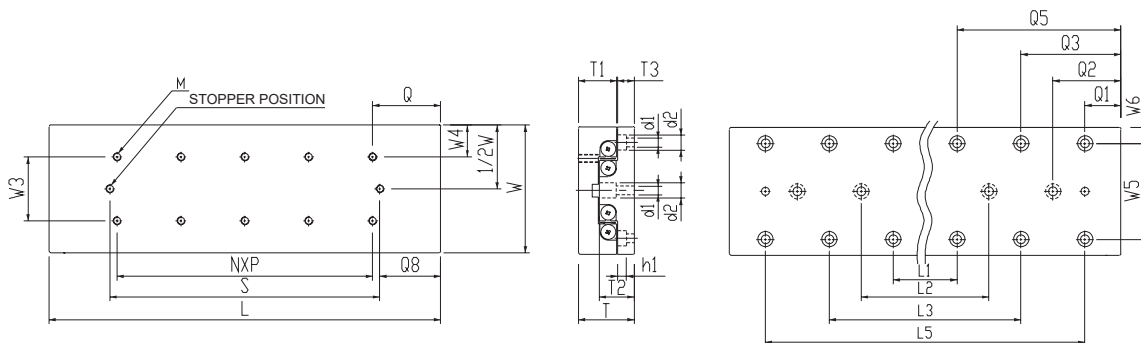
Table and rail are in one unit in this series.
GRB-S No Surface finished to V-groove surface of the rail.



★ Each of load and torque changes oppositely in stroke variation

Q ₁	Q ₂	Q ₃	W ₅	W ₆	d ₁	d ₂	h ₁	Basic Dynamic Load Rating C(N)	Basic Static Load Rating Co(N)	Allow-Able Load Fu(N)	Static Rated Moment			Weight (kg)	Table Moving Accuracy (μm)	
											M _R (N·m)	M _P (N·m)	M _Y (N·m)		Center Parallelism	Side Parallelism
3.5	/	/	22	4	2.55	4.1	2.5	379	576	192	2.6	1.2	1.4	0.09	2	4
								523	865	288	3.9	2.6	3.0	0.12		
								657	1,153	384	5.2	4.6	5.2	0.16		
		783						1,441	480	6.5	7.2	7.9	0.19	5		
		903						1,729	576	7.8	10.4	11.2	0.23			
		1,131						2,306	769	10.4	18.4	17.3	0.26			
		1,240						2,594	865	11.7	23.3	22.0	0.30			
5	/	/	30	5	3.5	6	3.2	895	1,170	390	7.0	3.1	3.9	0.20	2	4
								2,901	4,567	1,522	42.6	22.8	26.6	0.29		
								2,901	4,567	1,522	42.6	22.8	19.0	0.36		
		4,338						7,611	2,591	71.0	63.4	57.1	0.46	3		
		3,640						6,089	2,030	56.8	40.6	45.7	0.52			
		5,005						9,133	3,044	85.2	91.3	98.9	0.63			
		5,005						9,133	3,044	85.2	91.3	83.7	0.69			
10	/	/	40	10	4.5	7.5	4.5	2,901	4,567	1,522	42.6	22.8	26.6	0.65	2	5
								4,338	7,611	2,537	71.0	63.4	57.1	0.95		
								5,646	10,655	3,552	99.5	124.3	115.4	1.25		
		6,268						12,178	4,059	113.7	162.4	172.5	1.55	3		
		7,462						15,222	5,074	142.1	253.7	266.4	1.85			
		8,603						18,266	6,089	170.5	365.3	350.1	2.15			
		9,157						19,789	6,596	184.7	428.8	445.2	2.45			

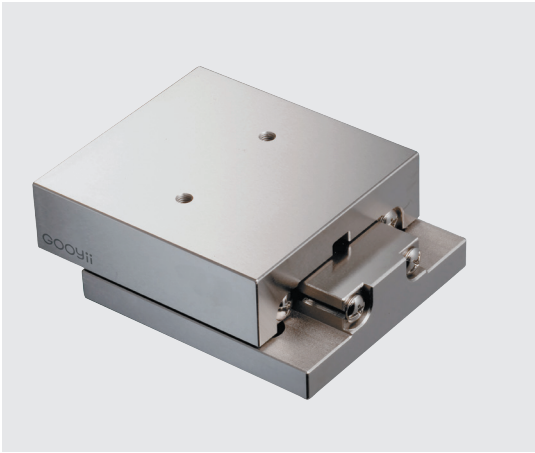
GOORB - S



Specification

Model No.	Max. Stroke (mm)	Roller Dia. (mm)	Main Dimensions (mm)			Mounting Dimensions (mm)																
			W	T	L	T ₁	T ₂	T ₃	N*P	M	S	Q	Q ₈	W ₃	W ₄	L ₁	L ₂	L ₃				
GOORB80-85-S	50	Ø4.0	80±0.1	35±0.1	85	24	22	10.5	/	M5	64	42.5	28	40	20	160	/	80				
GOORB80-125-S	75				125				1*40										89	18	80	/
GOORB80-165-S	105				165				2*40										119	23	120	
GOORB80-205-S	135				205				3*40										149	28	160	80
GOORB80-245-S	155				245				4*40										169	38	200	120
GOORB80-285-S	185				285				5*40										199	43	240	160
GOORB80-325-S	215				325				6*40										229	48	280	200
GOORB100-110-S	60	Ø6.0	100±0.1	45±0.1	110	31	29	13	/	M6	77	55	38.5	50	25	240	/	140				
GOORB100-160-S	95				160				1*50										113	23.5	140	/
GOORB100-210-S	130				210				2*50										148	31	190	90
GOORB100-260-S	165				260				3*50										183	38.5	240	140
GOORB100-310-S	200				310				4*50										218	46	290	190
GOORB100-360-S	235				360				5*50										253	53.5	340	240
GOORB100-410-S	265				410				6*50										283	63.5	390	290
GOORB100-510-S	365	510	8*50	390	60	490	390															
GOORB145-210-S	130	Ø9.0	145±0.1	60±0.1	210	43	38.5	16	/	M8	156	105	12	85	30	300	100	/				
GOORB145-310-S	180				310				1*100										206	52	200	
GOORB145-410-S	350				410				2*100										376	17	300	100
GOORB145-510-S	450				510				3*100										476		400	200
GOORB145-610-S	550				610				4*100										576		500	300

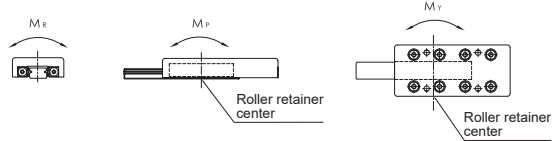
GOORB - S



Material Specification

Material Model No.	Table	Rail	Retainer	Roller
GOORB - S	SUS440C+Ni		SUS304	SUS440C

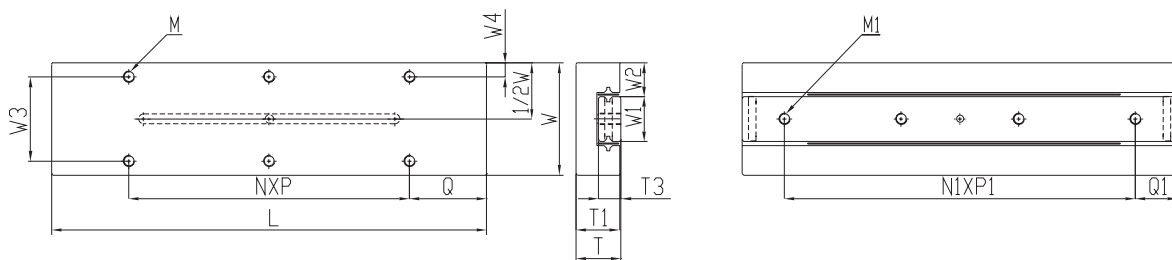
Table and rail are in one unit in this series.
GRB-S No Surface finished to V-groove surface of the rail.



★ Each of load and torque changes oppositely in stroke variation

											Basic Dynamic Load Rating C(N)	Basic Static Load Rating Co(N)	Allow-Able Load Fu(N)	Static Rated Moment			Weight (kg)	Table Moving Accuracy (μm)		
L ₅	Q ₁	Q ₂	Q ₃	Q ₅	W ₅	W ₆	d ₁	d ₂	h ₁	M _R (N·m)				M _P (N·m)	M _V (N·m)	Center Parallelism		Side Parallelism		
/	22.5	/	/	/	60	10	5.5	9.5	6	6,617	9,357	3,119	124.8	87.3	76.4	1.70	2	5		
										9,097	14,035	4,678	187.1	196.5	180.1	2.52	3	6		
										10,264	16,375	5,458	218.3	267.5	286.6	3.34		7		
			12,492	21,053	7,018	280.7	442.1	466.7	4.14											
			14,612	25,732	8,577	343.1	660.4	690.5	4.95	4	8									
			16,646	30,410	10,137	405.5	922.4	957.9	5.77											
			120			102.5						18,612	35,089	11,696	467.8	1228.1	1187.2	6.57		
/	10	/	/	/	60	20	7	11	6.5	13,923	21,053	7,018	315.8	252.6	221.1	3.48	3	6		
										16,592	26,316	8,772	394.7	394.7	434.2	5.10		7		
										21,596	36,842	12,281	552.6	773.7	828.9	6.72				
										26,285	47,369	15,790	710.5	1279.0	1207.9	8.31				
			140			110						30,744	57,895	19,298	868.4	1910.5	1823.7	9.95	4	8
			190				35,024	68,421	22,807	1026.3	2668.4	2565.8	11.53							
			290				39,160	78,948	26,316	1184.2	3552.6	3434.2	13.16							
							45,141	84,600	28,200	1269.0	4568.4	4441.5	16.52							
/	55	/	/	/	90	27.5	9	14	8.5	46,991	72,741	24,247	1745.8	1697.3	1527.6	13.11	3	7		
										61,165	101,838	33,946	2444.1	3326.7	3564.3	19.44				
			67,898	116,386	38,795	2793.3	4345.1	4073.5	25.65	4	8									
			80,829	145,482	48,494	3491.6	6789.2	6449.7	31.97											
			87,073	160,031	53,344	3840.7	8214.9	8588.3	38.22											

GOORC - S



Specification

Model No.	Max. Stroke (mm)	Roller Dia. (mm)	Main Dimensions (mm)			Mounting Dimensions (mm)								
			W	T	L	W ₃	W ₄	N*P	Q	M	T ₁	W ₁	W ₂	N ₁ *P ₁
GOORC20-25-S	12	Ø1.5	20±0.1	8±0.1	25	14	3	1*18	3.5	M2.5	7.5	7	6.5	2*7.5
GOORC20-35-S	18				1*28									
GOORC20-45-S	25				1*20			12.5	3*10					
GOORC20-55-S	32				1*30									
GOORC30-65-S	40	Ø2.0	30±0.1	12±0.1	65	22	4	1*30	17.5	M3	11.5	12	9	3*15
GOORC30-80-S	50				1*45			4*15						
GOORC30-95-S	60				2*30			5*15						
GOORC40-105-S	60	Ø3.0	40±0.1	16±0.1	105	30	5	1*50	27.5	M4	15.5	16	12	3*25
GOORC40-130-S	75				1*75			4*25						
GOORC40-155-S	90				2*50			5*25						

Ordering Example :	GOORC	-	20	-	25	-	S
	C type table		Table width		Table length		Corrosion Resistance

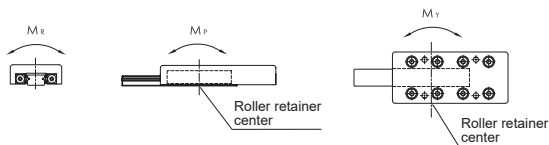
GOORC - S



Material Specification

Material Model No. / Component	Table	Rail	Retainer	Roller
GOORC - S	SUS440C+Ni	SUS304	SUS304	SUS440C

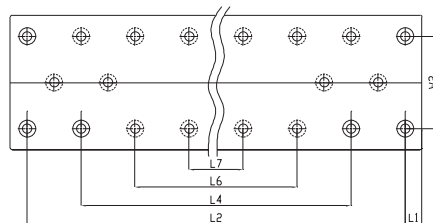
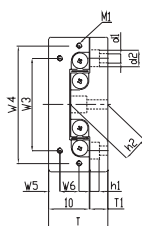
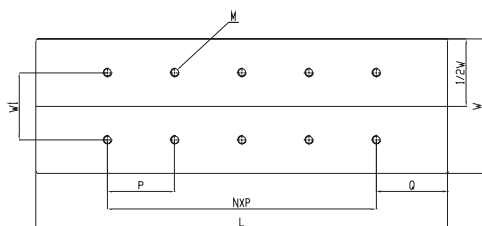
Table and rail are in one unit in this series.
GRC-S No Surface finished to V-groove surface of the rail.



★ Each of load and torque changes oppositely in stroke variation

Q ₁	M ₁	T ₃	Basic Dynamic Load Rating C(N)	Basic Static Load Rating Co(N)	Allow-Able Load Fu(N)	Static Rated Moment			Weight (kg)	Table Moving Accuracy (μm)	
						M _R (N·m)	M _P (N·m)	M _Y (N·m)		Center Parallelism	Side Parallelism
5	M2.5	4	523	865	288	2.2	2.6	2.2	0.03	2	4
			657	1153	384	3.0	4.6	5.2	0.04		
			783	1441	480	3.7	7.2	7.9	0.05		
			903	1729	576	4.4	10.4	11.2	0.06		
10	M3	6	1849	2924	975	12.7	19.5	21.4	0.16	2	5
			2407	4093	1364	17.7	38.2	35.5	0.20		
			2672	4678	1559	20.3	49.9	46.8	0.24		
15	M4	8	5646	10655	3552	61.8	124.3	133.2	0.47	3	6
			6872	13700	4567	79.5	205.5	194.1	0.58		
			8038	16744	5581	97.1	307.0	293.0	0.70		

GOORM - S



Specification

Model No.	Max. Stroke (mm)	Roller Dia. (mm)	Main Dimensions (mm)			Mounting Dimensions (mm)										
			W	T	L	T ₂	W ₁	M	Q	N*P	W ₃	W ₅	M ₁	W ₂	d ₁	d ₂
GOORM30-25-S	12	Ø1.5	30±0.1	17±0.1	25	11	10	M2*4L	125	/	12	2.5	M2*6L	22	2.5	4.5
GOORM30-35-S	18				1*10											
GOORM30-45-S	25				2*10											
GOORM30-55-S	32				3*10											
GOORM30-65-S	40				4*10											
GOORM30-75-S	45				5*10											
GOORM30-85-S	50				6*10											
GOORM40-35-S	18				Ø2.0					40±0.1						
GOORM40-50-S	30	1*15														
GOORM40-65-S	40	2*15														
GOORM40-80-S	50	3*15														
GOORM40-95-S	60	4*15														
GOORM40-110-S	70	5*15														
GOORM40-125-S	80	6*15														
GOORM40-140-S	90	7*15														
GOORM40-155-S	100	8*15														
GOORM40-170-S	110	9*15														
GOORM40-185-S	120	10*15														

Ordering Example :	GOORM	-	30	-	25	-	S
	M type table		Table width		Table length		Corrosion Resistance

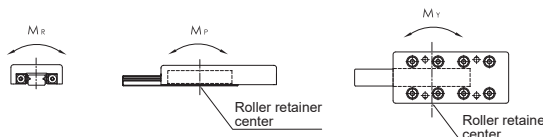
GOORM - S



Material Specification

Material Model No. / Component	Table	Rail	Retainer	Roller
GOORM - S	SUS440C+Ni		SUS304	SUS440C

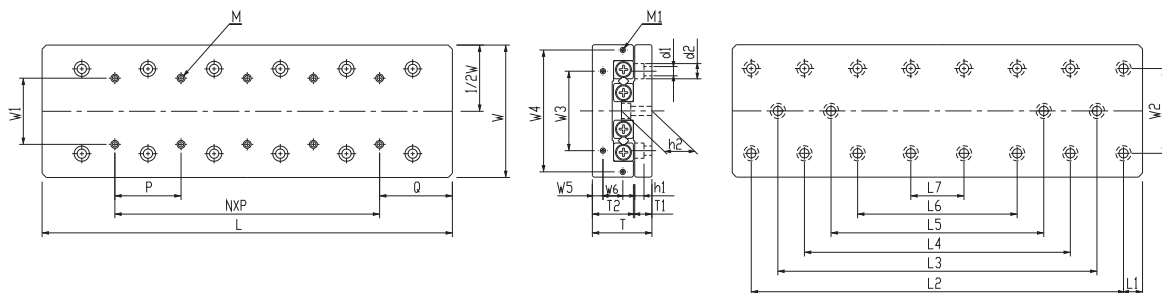
Table and rail are in one unit in this series.
GRM-S No Surface finished to V-groove surface of the rail.



★ Each of load and torque changes oppositely in stroke variation

							Basic Dynamic Load Rating C(N)	Basic Static Load Rating Co(N)	Allow-Able Load Fu(N)	Static Rated Moment			Weight (kg)	Table Moving Accuracy (μm)		
h ₁	T ₁	h ₂	L ₁	L ₂	L ₄	L ₆				L ₇	M _R (N·m)	M _P (N·m)		M _V (N·m)	Center Parallelism	Side Parallelism
2.5	5.5	10	3.5	18	/	/	/	379	576	192	2.6	1.2	1.4	0.09	2	4
				28				523	288	3.9	2.6	3.0	0.12			
				38				657	384	5.2	4.6	5.2	0.16			
				48	783			480	6.5	7.2	7.9	0.19				
				58	38			903	1,929	576	7.8	10.4	11.2	0.23		5
				67	48			1,131	2,306	769	10.4	18.4	17.3	0.26		
				78	58			1,240	2,594	865	11.7	23.3	22.0	0.30		
				25	6.5			13	5	25	/	/	895	1,170		
40	1,552	780	14.0	12.5		10.9	0.29									
55	1,849	975	17.5	19.5		17.5	0.38									
70	40	2,134	3,509	1,170		21.1	28.1			30.4	0.46		5			
85	55	2,407	4,093	1,364		24.6	38.2			40.9	0.55					
100	70	2,930	5,263	1,754		31.6	63.2			59.6	0.64					
115	85	3,181	5,848	1,949		35.1	78.0			74.1	0.72			3	6	
130	100	3,427	6,433	2,144		38.6	94.3			98.6	0.83					
145	115	3,668	7,017	2,339	42.1	112.3	117.0	0.90								
160	130	4,136	8,187	2,729	49.1	152.8	147.4	0.99	7							
175	145	4,365	8,772	2,924	52.6	175.4	169.6	1.07								

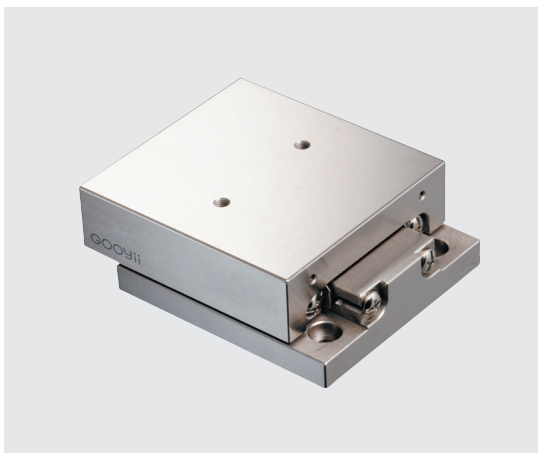
GOORM - S



Specification

Model No.	Max. Stroke (mm)	Roller Dia. (mm)	Main Dimensions (mm)			Mounting Dimensions (mm)										
			W	T	L	T ₂	W ₁	M	Q	N*P	W ₃	W ₅	M ₁	W ₂	d ₁	d ₂
GOORM60-55-S	30	Ø3.0	60±0.1	28±0.1	55	18.5	25	M4*8L	27.5	/	40	5.5	M3*6L	40	4.5	8
GOORM60-80-S	45				80					1*25						
GOORM60-105-S	60				105					2*25						
GOORM60-130-S	75				130					3*25						
GOORM60-155-S	90				155					4*25						
GOORM60-180-S	105				180					5*25						
GOORM60-205-S	130				205					6*25						
GOORM60-230-S	155				230					7*25						
GOORM60-255-S	180				255					8*25						
GOORM60-280-S	205				280					9*25						
GOORM60-305-S	230				305					10*25						
GOORM80-85-S	50	Ø4.0	80±0.1	35±0.1	85	24	40	M5*10L	42.5	/	55	6.5	M3*6L	55	5.5	10
GOORM80-125-S	75				125					1*40						
GOORM80-165-S	105				165					2*40						
GOORM80-205-S	130				205					3*40						
GOORM80-245-S	155				245					4*40						
GOORM80-285-S	185				285					5*40						
GOORM80-325-S	210				325					6*40						
GOORM80-365-S	235				365					7*40						
GOORM80-405-S	265				405					8*40						

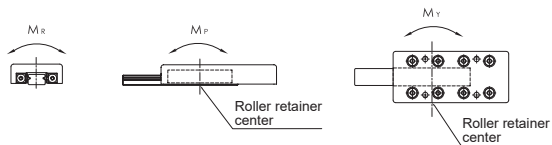
GOORM - S



Material Specification

Material Model No.	Component			
	Table	Rail	Retainer	Roller
GOORM - S	SUS440C+Ni		SUS304	SUS440C

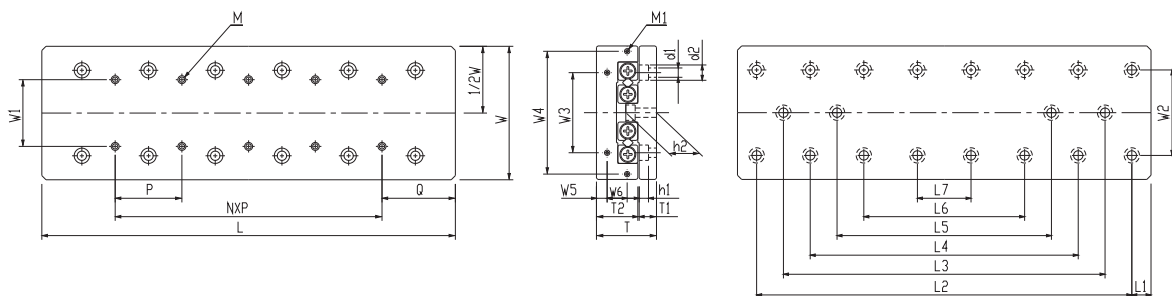
Table and rail are in one unit in this series.
GRM-S No Surface finished to V-groove surface of the rail.



★ Each of load and torque changes oppositely in stroke variation

h ₁	T ₁	h ₂	L ₁	L ₂	L ₃	L ₄	L ₅	Basic Dynamic Load Rating C(N)	Basic Static Load Rating Co(N)	Allow-able Load Fu(N)	Static Rated Moment			Weight (kg)	Table Moving Accuracy (μm)						
											M _R (N·m)	M _P (N·m)	M _Y (N·m)		Center Parallelism	Side Parallelism					
4.5	9	17.5	10	35	/	/	/	2,901	4,567	1,522	42.6	22.8	26.6	0.65	2	5					
				60				4,338	7,611	2,537	71.0	63.4	57.1	0.95							
				85				5,646	10,655	3,552	99.8	124.3	115.4	1.25							
				110	6,268			12,178	4,059	113.7	162.4	172.5	1.55	3	6						
				135	85			7,492	15,222	5,074	142.1	253.7	266.4			1.85					
				160	110			8,603	18,266	6,089	170.5	365.3	350.1			2.15					
										185	135	85	9,157	19,789	6,596	184.7	428.8	445.2	2.44	7	7
										210	160	110	9,702	21,311	7,104	198.9	497.3	515.0	2.74		
										235	185	135	10,767	24,355	8,118	227.3	649.5	629.2	3.04		
										260	210	160	110	11,288	25,877	8,626	241.5	733.2	711.6	3.33	3
				285	235	185	135	11,802	27,400	9,133	255.7	822.0	844.8	3.63							
5.4	10.5	22	10	60	/	/	/	6,617	9,357	3,119	124.8	87.3	76.4	1.68	2	5					
				105				9,097	14,035	4,678	187.1	196.5	180.1	2.48							
				145				10,264	16,375	5,458	218.3	267.5	286.6	3.27	3	7					
				185	105			12,492	21,035	7,018	280.7	442.1	466.7	4.06							
				225	145			14,612	25,732	8,577	343.1	660.4	690.5	4.86							
										265	185	16,646	30,410	10,137	405.5	922.4	957.9	5.66	4	8	
										305	225	145	18,612	35,089	11,696	467.8	1228.1	1269.0			6.44
										345	265	185	20,519	39,767	13,256	530.2	1577.4	1623.8			7.24
										385	305	225	22,377	44,445	14,815	592.6	1970.4	1918.6	8.04		

GOORM - S

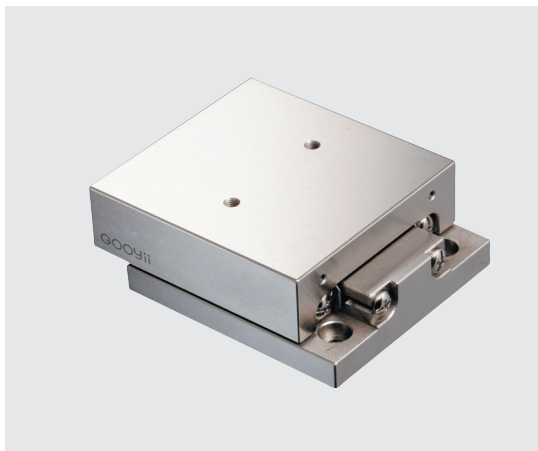


Specification

Model No.	Max. Stroke (mm)	Roller Dia. (mm)	Main Dimensions (mm)			Mounting Dimensions (mm)											
			W	T	L	T ₂	W ₁	M	Q	N*P	W ₃	W ₄	W ₅	W ₆	M ₁	W ₂	d ₁
GOORM100-110-S	60	Ø6.0	100±0.1	45±0.1	110	31	50	M6*12L	55	/	60	92	8	15	M4*8L	60	7
GOORM100-160-S	95				160					1*50							
GOORM100-210-S	130				210					2*50							
GOORM100-260-S	165				260					3*50							
GOORM100-310-S	200				310					4*50							
GOORM100-360-S	235				360					5*50							
GOORM100-410-S	265				410					6*50							
GOORM100-460-S	300				460					7*50							
GOORM100-510-S	335				510					8*50							

Ordering Example :	GOORM	-	100	-	110	-	S
	M type table		Table width		Table length		Corrosion Resistance

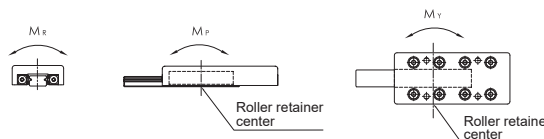
GOORM - S



Material Specification

Component Material Model No.	Table	Rail	Retainer	Roller
GOORM - S	SUS440C+Ni		SUS304	SUS440C

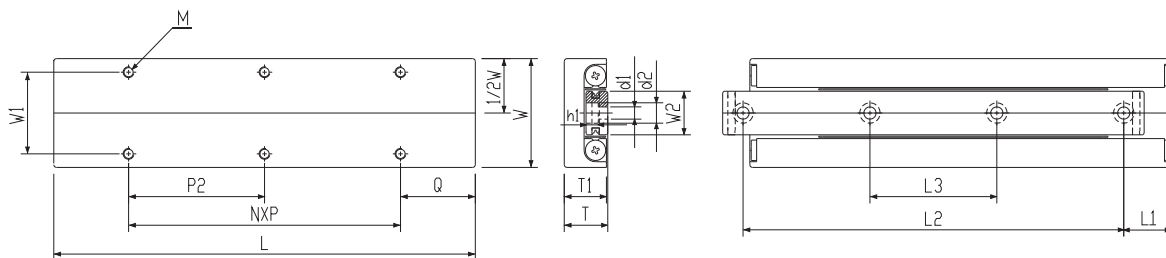
Table and rail are in one unit in this series.
GRM-S No Surface finished to V-groove surface of the rail.



★ Each of load and torque changes oppositely in stroke variation

									Basic Dynamic Load Rating C(N)	Basic Static Load Rating Co(N)	Allow-Able Load Fu(N)	Static Rated Moment			Weight (kg)	Table Moving Accuracy (μm)		
d ₂	h ₁	T ₁	h ₂	L ₁	L ₂	L ₃	L ₄	L ₅				M _R (N·m)	M _P (N·m)	M _V (N·m)		Center Parallelism	Side Parallelism	
11.5	7	13	29	10	90	/	/	/	/	13,923	21,053	7,018	315.8	252.6	221.1	3.45	3	6
					140					16,592	26,316	8,772	394.7	394.7	646.2	5.05		
					190	90				21,596	36,842	12,281	522.6	773.9	828.9	6.63		
					240	140				26,285	49,369	15,790	710.5	1279.0	1207.9	8.23	4	8
					290	190				30,744	57,895	19,298	868.4	1910.5	1823.7	9.84		
					340	240				35,024	68,421	22,807	1026.3	2668.4	2565.8	11.41		
					390	290				39,160	78,948	26,316	1184.2	3552.6	3434.2	13.01	4	8
					440	340				41,481	84,211	28,070	1263.2	4042.1	4168.4	14.61		
					490	390				45,141	94,737	31,579	1421.1	5115.8	5257.9	16.20		

GOORH - S



Specification

Model No.	Max. Stroke (mm)	Roller Dia. (mm)	Main Dimensions (mm)			Mounting Dimensions (mm)							
			W	T	L	T ₁	W ₂	W ₁	M	Q	N*P	d ₁	d ₂
GOORH20-25-S	12	Ø1.5	20±0.1	8±0.1	25	7.5	6.6	14	M2.5*3.5L	3.5	1*18	2.5	4.1
GOORH20-35-S	18				1*28								
GOORH20-45-S	25				1*20								
GOORH20-55-S	32				1*30								
GOORH20-65-S	40				2*20								
GOORH20-75-S	45				1*30								
GOORH20-85-S	50				2*30								
GOORH30-35-S	18	Ø2.0	30±0.1	12±0.1	35	11.5	12.0	22	M3*5.5L	3.5	1*28	3.5	6
GOORH30-50-S	30				1*43								
GOORH30-65-S	40				1*30								
GOORH30-80-S	50				1*45								
GOORH30-95-S	60				2*30								
GOORH30-110-S	70				1*45								
GOORH30-125-S	80				2*45								
GOORH40-55-S	30	Ø3.0	40±0.1	16±0.1	55	15.5	16	30	M4*7.5L	7.5	1*40	4.5	7.5
GOORH40-80-S	45				1*65								
GOORH40-105-S	60				1*50								
GOORH40-130-S	75				1*75								
GOORH40-155-S	90				2*50								
GOORH40-180-S	105				1*75								
GOORH40-205-S	130				2*75								

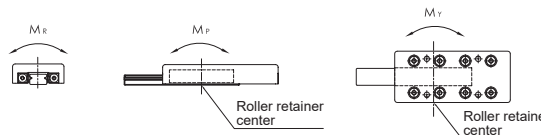
GOORH - S



Material Specification

Material Model No.	Component			
	Table	Rail	Retainer	Roller
GOORH - S	SUS440C+Ni		SUS304	SUS440C

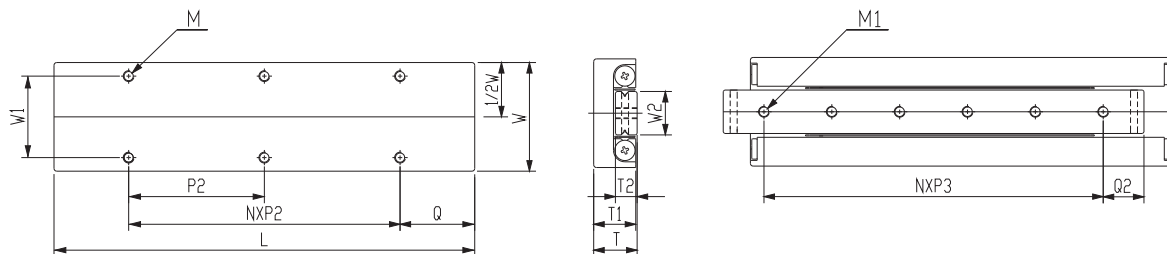
Table and rail are in one unit in this series.
GRH-S No Surface finished to V-groove surface of the rail.



★ Each of load and torque changes oppositely in stroke variation

h ₁	L ₁	L ₂	L ₃	Basic Dynamic Load Rating C(N)	Basic Static Load Rating Co(N)	Allow-able Load Fu(N)	Static Rated Moment			Weight (kg)	Table Moving Accuracy (μm)	
							M _R (N·m)	M _P (N·m)	M _Y (N·m)		Center Parallelism	Side Parallelism
2.2	3.5	18	/	379	576	192	1.4	1.2	1.4	0.02	2	4
	5	25		523	865	288	2.2	2.6	3.0	0.03		
	3.5	38	25	657	1,153	384	2.9	4.6	5.2	0.04	2	5
		48	29	783	1,441	480	3.6	7.2	7.9	0.05		
	5	55	31	903	1,729	576	4.3	10.4	11.2	0.06		
		65	35	1,131	2,306	769	5.8	18.4	17.3	0.07		
75		40	1,240	2,594	865	6.5	23.3	22.0	0.08			
3.3	5	25	/	895	1,170	390	5.1	3.1	3.9	0.08		
	7.5	35		1,552	2,339	780	10.1	12.5	10.9	0.12		
	5	55	33	1,849	2,924	975	12.7	19.5	17.5	0.15	2	5
		70	40	2,164	3,509	1,170	15.2	28.1	30.4	0.19		
		85	45	2,407	4,093	1,364	17.7	38.2	40.9	0.22		
	7.5	95	50	2,930	5,263	1,754	22.8	63.2	59.6	0.26		
110		55	3,181	5,848	1,949	25.3	78.0	74.1	0.29			
4.5	7.5	40	/	2,901	4,567	1,522	26.5	22.8	26.6	0.23		
	6	65	43	4,338	7,611	2,537	44.1	63.4	57.1	0.34		
	7.5	90	55	5,646	10,655	3,552	61.8	124.3	115.4	0.45	3	
		115	65	6,268	12,178	4,059	70.6	162.4	172.5	0.56		
		140	95	7,462	15,222	5,074	88.3	253.7	266.4	0.66		
		165	85	8,603	18,266	6,089	105.9	365.3	350.1	0.78		
		190	90	9,157	19,789	6,596	114.8	428.8	445.2	0.88		

GOORS - S



Specification

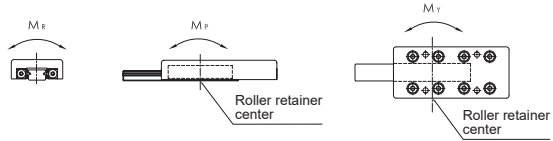
Model No.	Max. Stroke (mm)	Roller Dia. (mm)	Main Dimensions (mm)			Mounting Dimensions (mm)							
			W	T	L	T ₁	T ₂	W ₂	W ₁	M	M ₁	Q	Q ₂
GOORS20-25-S	12	1.5	20±0.1	8±0.1	25	7.5	4	6.6	14	M2.5*3.5L	M2.6	12.5	5
GOORS20-35-S	18				35								3.5
GOORS20-45-S	25				45								7.5
GOORS20-55-S	32				55								
GOORS20-65-S	40				65								
GOORS20-75-S	45				75								
GOORS20-85-S	50				85								
GOORS30-35-S	18	2.0	30±0.1	12±0.1	35	11.5	6	12	22	M3*5.5L	M3	17.5	7.5
GOORS30-50-S	30				50								3.5
GOORS30-65-S	40				65								10
GOORS30-80-S	50				80								
GOORS30-95-S	60				95								
GOORS30-110-S	70				110								
GOORS30-125-S	80				125								
GOORS40-55-S	30	3.0	40±0.1	16±0.1	55	15.5	8	16	30	M4*7.5L	M4*7.5L	27.5	10
GOORS40-80-S	45				80								7.5
GOORS40-105-S	60				105								15
GOORS40-130-S	75				130								
GOORS40-155-S	90				155								
GOORS40-180-S	105				180								
GOORS40-205-S	130				205								

GOORS - S

Material Specification

Material Model No.	Component			
	Table	Rail	Retainer	Roller
GOORS - S	SUS440C+Ni		SUS304	SUS440C

Table and rail are in one unit in this series.
GRS-S No Surface finished to V-groove surface of the rail.



★ Each of load and torque changes oppositely in stroke variation

N*P ₂	N*P ₃	Basic Dynamic Load Rating C(N)	Basic Static Load Rating Co(N)	Allow-Able Load Fu(N)	Static Rated Moment			Weight (kg)	Table Moving Accuracy (μm)	
					M _R (N·m)	M _P (N·m)	M _Y (N·m)		Center Parallelism	Side Parallelism
1*18	2*7.5	379	576	192	1.4	1.2	1.4	2	4	
1*28	2*10	523	865	288	2.4	2.6	3.0			
1*20	3*10	657	1,153	384	2.9	4.6	5.2		5	
1*30	4*10	783	1,441	480	3.6	7.2	7.9			
2*20	5*10	903	1,729	576	4.3	10.4	11.2			
1*30	6*10	1,131	2,306	769	5.8	18.4	17.3		2	5
2*30	7*10	1,240	2,594	865	6.5	23.3	22.0			
1*28	1*20	895	1,170	390	5.1	3.1	3.9	4		
1*43	2*15	1,552	2,339	780	10.1	12.5	10.9			
1*30	3*15	1,849	2,924	975	12.7	19.5	17.5	2		5
1*45	4*15	2,134	3,509	1170	15.2	28.1	30.4			
2*30	5*15	2,407	4,093	1364	17.7	38.2	40.9			
1*45	6*15	2,930	5,263	1754	22.8	63.2	59.6			
2*45	7*15	3,181	5,848	1949	25.3	78.0	74.1	2	5	
1*40	1*40	2,901	4,567	1522	26.5	22.8	26.6			
1*65	1*65	4,338	7,611	2,537	44.1	63.4	57.1			
1*50	1*50	5,646	10,655	3,552	61.8	124.3	115.4	3	5	
1*75	1*75	6,268	12,178	4,059	70.6	162.4	172.5			
2*50	2*50	7,462	15,222	5,074	88.3	253.7	266.4			
1*75	1*75	8,603	18,266	6,089	105.9	365.3	350.1			
2*75	2*75	9,157	19,789	6,596	114.8	428.8	445.2			